

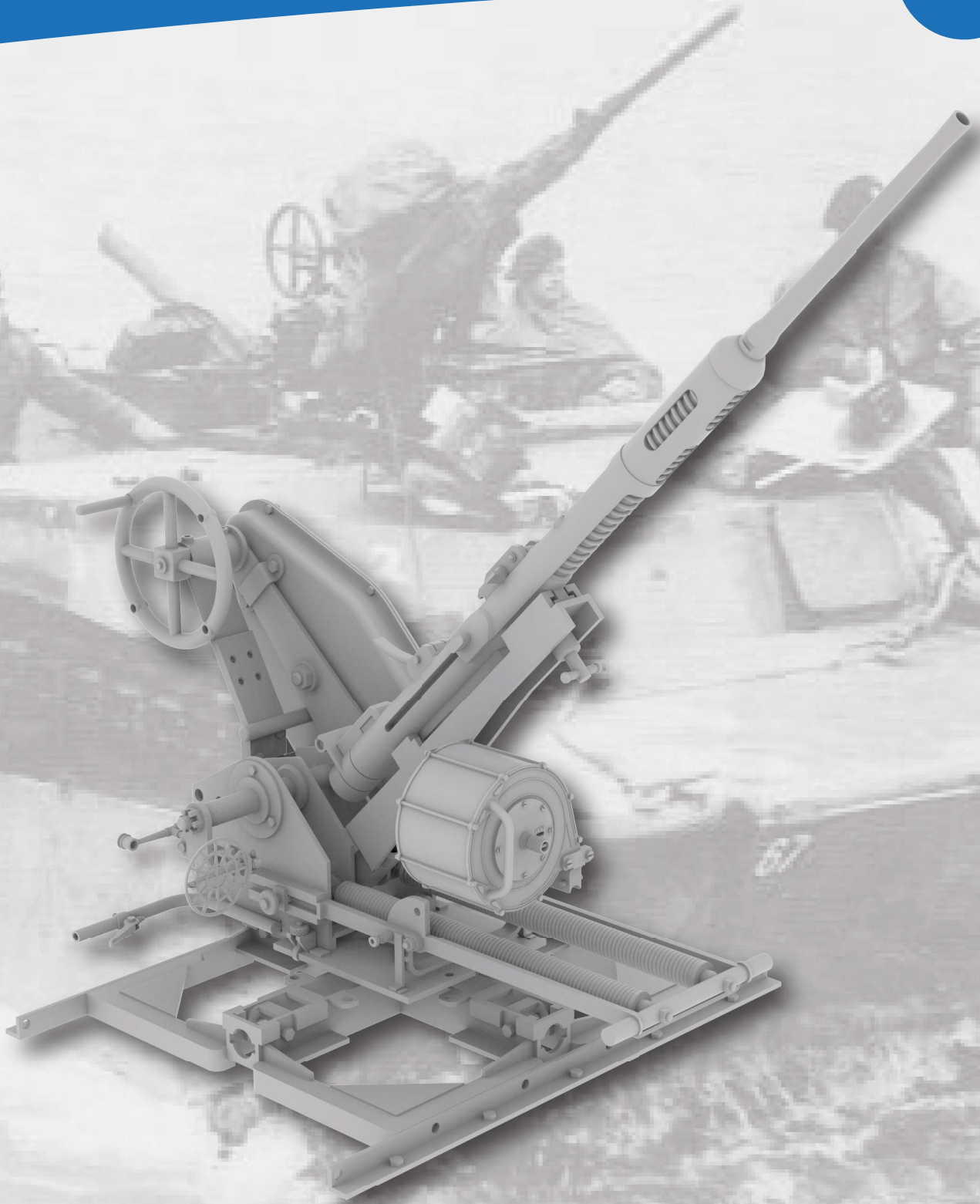


Polsten 20mm Gun M.K.I. HDM35220

HD Models
Via Filippo Nicolai, 24
00136 - Roma

+39 06 39736835
infohdmodels.it
www.hdmodels.it

1/35



Polsten 20mm Gun M.K.I. HDM35220



Il Polsten era uno sviluppo polacco del cannone Oerlikon da 20 mm . Il Polsten è stato progettato per essere più semplice e molto più economico da costruire rispetto all'Oerlikon, senza ridurne l'efficacia.

Quando la Germania nazista invase la Polonia nel 1939, il team di designer polacco fuggì nel Regno Unito e riprese a lavorare insieme ai designer cechi e britannici. La necessità del Polsten fu apparentemente discussa nel giugno 1941. Entrò in servizio nel marzo 1944 insieme all'Oerlikon. Sia l'Oerlikon che il Polsten utilizzavano caricatori a tamburo simili da 60 colpi , sebbene il Polsten potesse anche utilizzare un caricatore a scatola più semplice da 30 colpi. Rimase in servizio fino agli anni '50.

Il cannone Polsten veniva utilizzato sui veicoli corazzati dotati di cannoni antiaerei basati sul carro armato Cromwell/Centaur e sul carro armato antiaereo Skink .

Il Polsten era montato anche sugli LVT britannici e sui primi modelli del carro Centurion , non coassialmente al cannone principale ma in un supporto indipendente sul lato sinistro della torretta. Sono stati sviluppati vari supporti doppi, tripli e quadrupli. John Inglis Limited di Toronto , Ontario, in Canada produsse molte migliaia di armi e circa 500 montature quadruple che videro un servizio limitato alla fine della guerra. Questi supporti multipli erano sia trainati che montati su camion. Anche i cannoni, i caricatori e le scatole di munizioni Polsten furono prodotti in Australia dalla General Motors Holden negli stabilimenti di Woodville e Beverley nel South Australia durante la seconda guerra mondiale. Sono stati utilizzati dall'esercito australiano a terra e su piccole imbarcazioni.

The Polsten was a Polish development of the 20 mm Oerlikon cannon. The Polsten was designed to be simpler simple and much cheaper to build than the Oerlikon, without reducing its effectiveness.

When Nazi Germany invaded Poland in 1939, the Polish design team fled to the UK and resumed work together with Czech and British designers. The need for the Polsten was apparently discussed in June 1941. It entered service in March 1944 together with the Oerlikon. Both the Oerlikon and the Polsten used similar 60-round drum magazines, although the Polsten could also use a simpler 30-round box magazine. It remained in service until the 1950s.

The Polsten gun was used on armoured vehicles equipped with anti-aircraft guns based on the tank Cromwell/Centaur tank and the Skink anti-aircraft tank.

The Polsten was also mounted on British LVTs and early Centurion tank models, not coaxially to the main gun but in an independent mount on the left side of the turret. Various double, triple and quad mounts were developed. John Inglis Limited of Toronto, Ontario, Canada produced many thousands of guns and about 500 quad mounts that saw limited service at the end of the war. These multiple mounts were both towed and truck-mounted. Polsten guns, magazines and ammunition boxes were also produced in Australia by General Motors Holden at its Woodville and Beverley plants in South Australia during World War II.

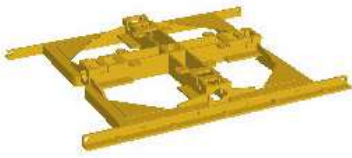
World War II. They were used by the Australian Army on land and in small boats.



**THIS IS NOT A TOY: NOT RECOMMENDED
FOR CHILDREN UNDER 14 YEARS**

Parts List

HDM35220



base Polsten 1_35.stl **1**



caricatore 30 round Polsten 1_35.stl **2**



cestello Polsten 1_35.stl **3**



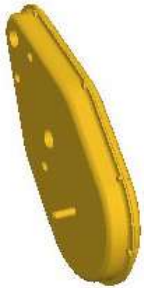
mirino Polsten 1_35.stl **4**



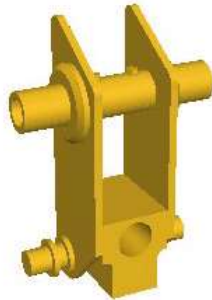
molle posizione 1 Polsten 1_35.stl **5**



molle posizione 2 Polsten 1_35.stl **6**



scatola meccanismo alzo Polsten 1_35.stl **7**



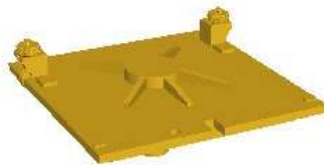
staffa centrale polsten 1_35.stl **8**



affusto Polsten 1_35.stl **9**



manubrio Polsten 1_35.stl **10**



piastra rotante Polsten 1_35.stl **11**



volantino Posten 1_35.stl **12**



staffa volantino Polsten 1_35.stl **13**



cestello Polsten modificato 1_35.stl **3A**



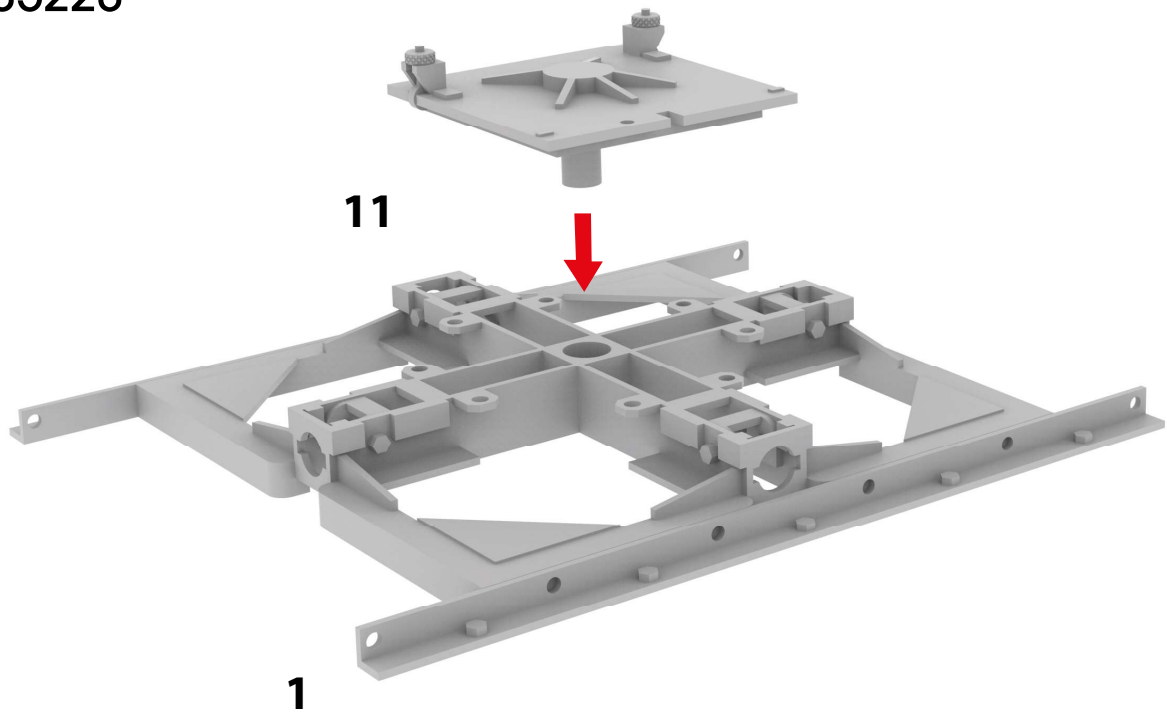
volantino Posten modificato 1_35.stl **12A**

Field Modification

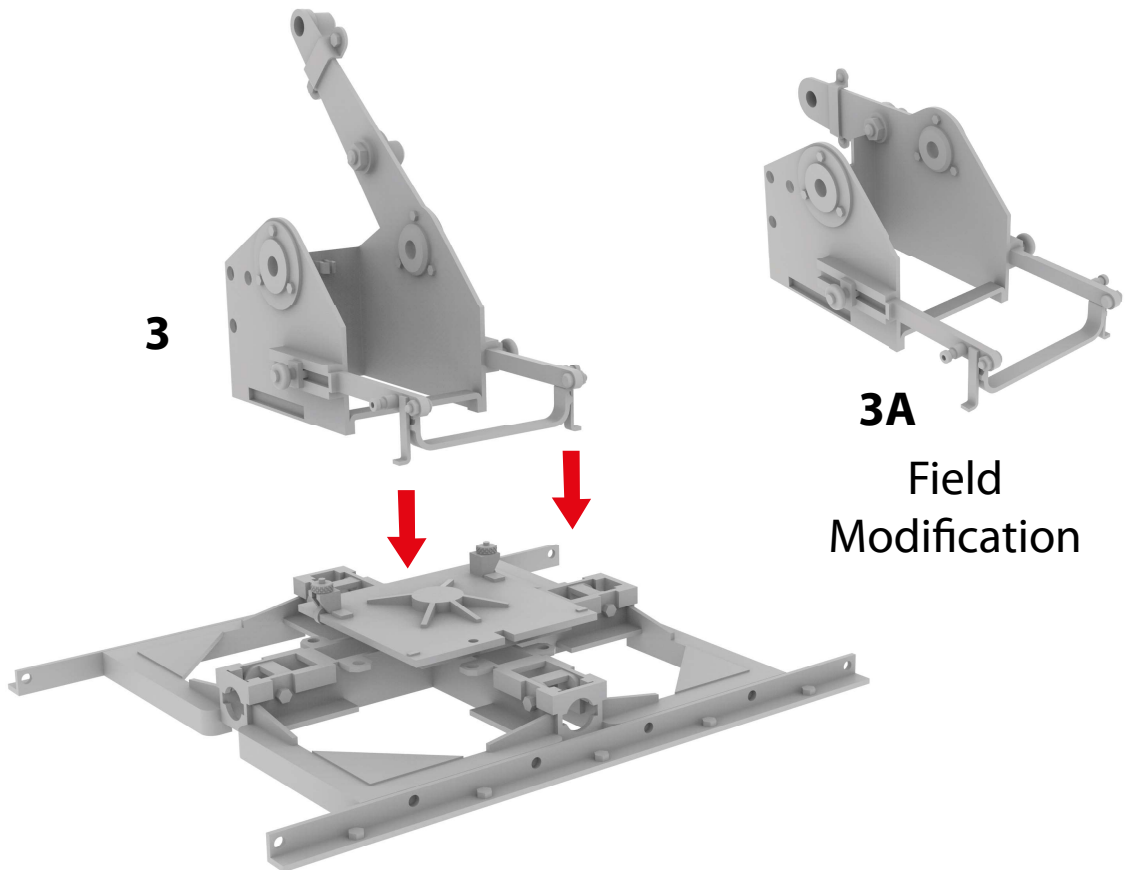


HDM MODELS

Kit Assembly
HDM35220



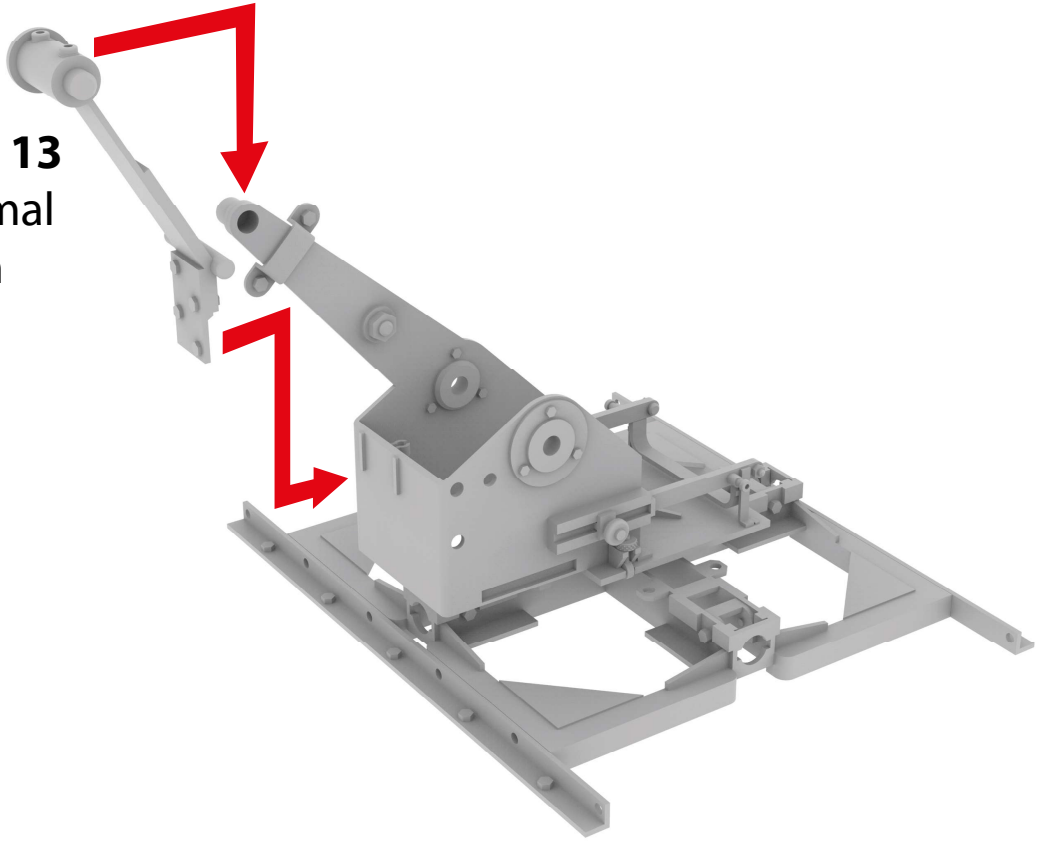
STEP 1



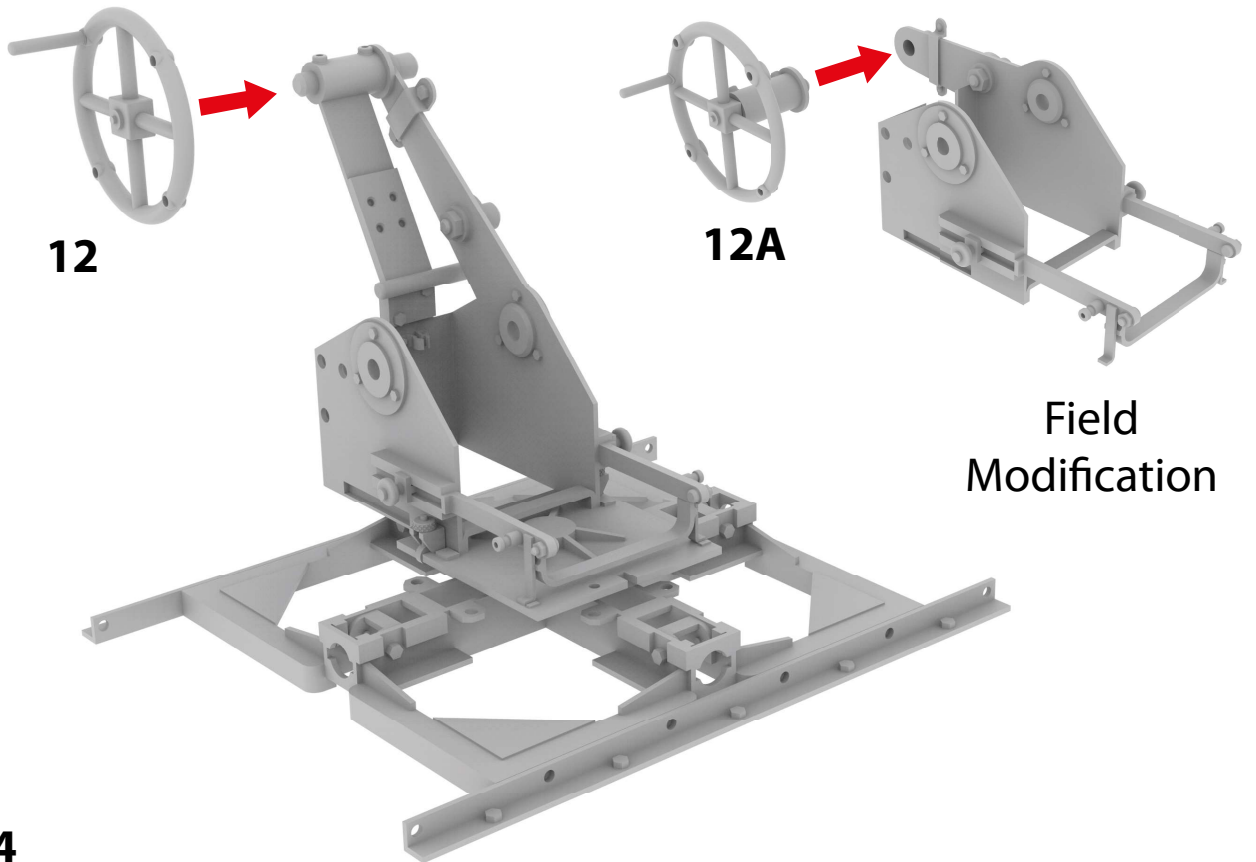
STEP 2

Kit Assembly
HDM35220

13
Only normal
version

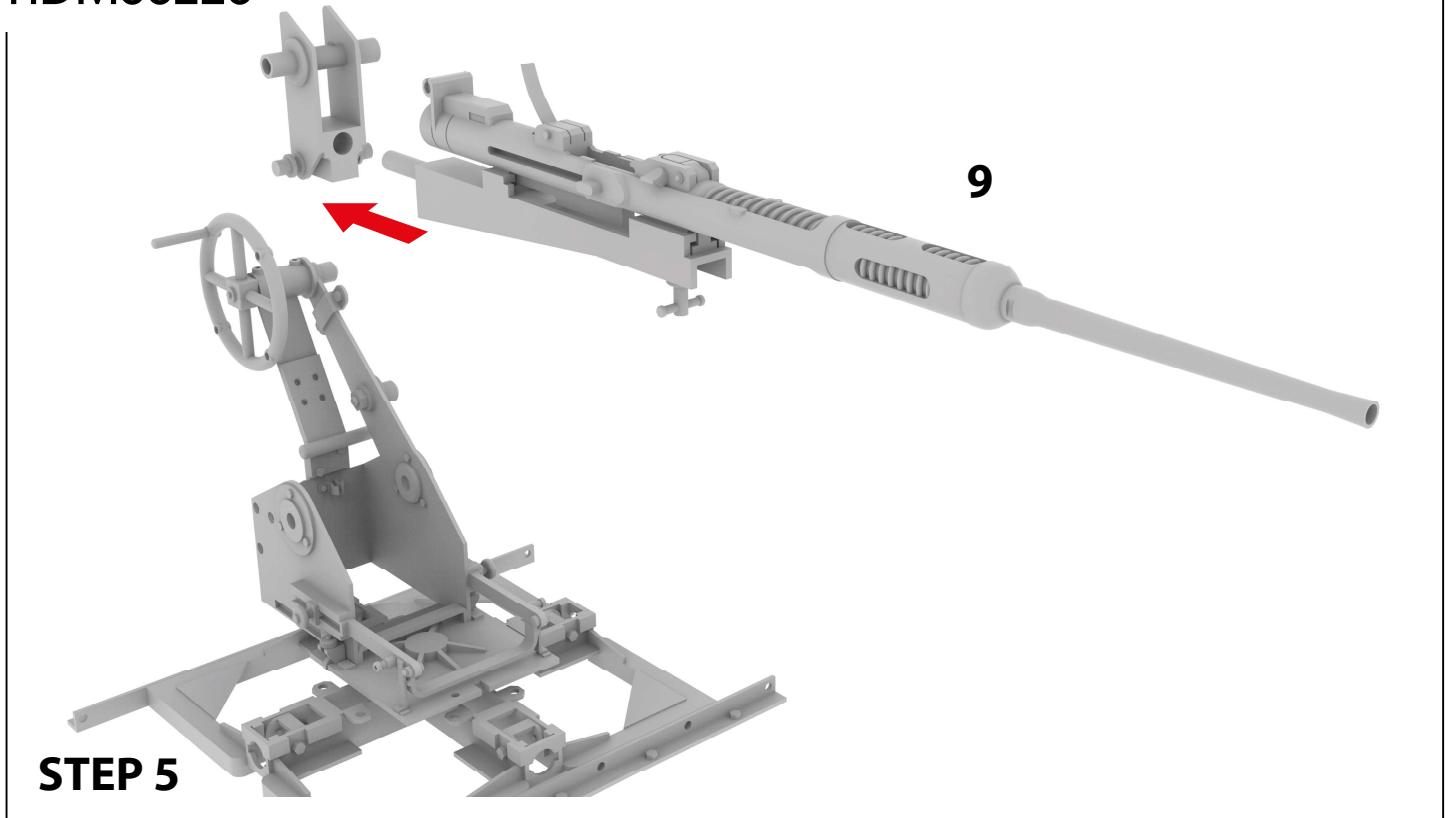


STEP 3

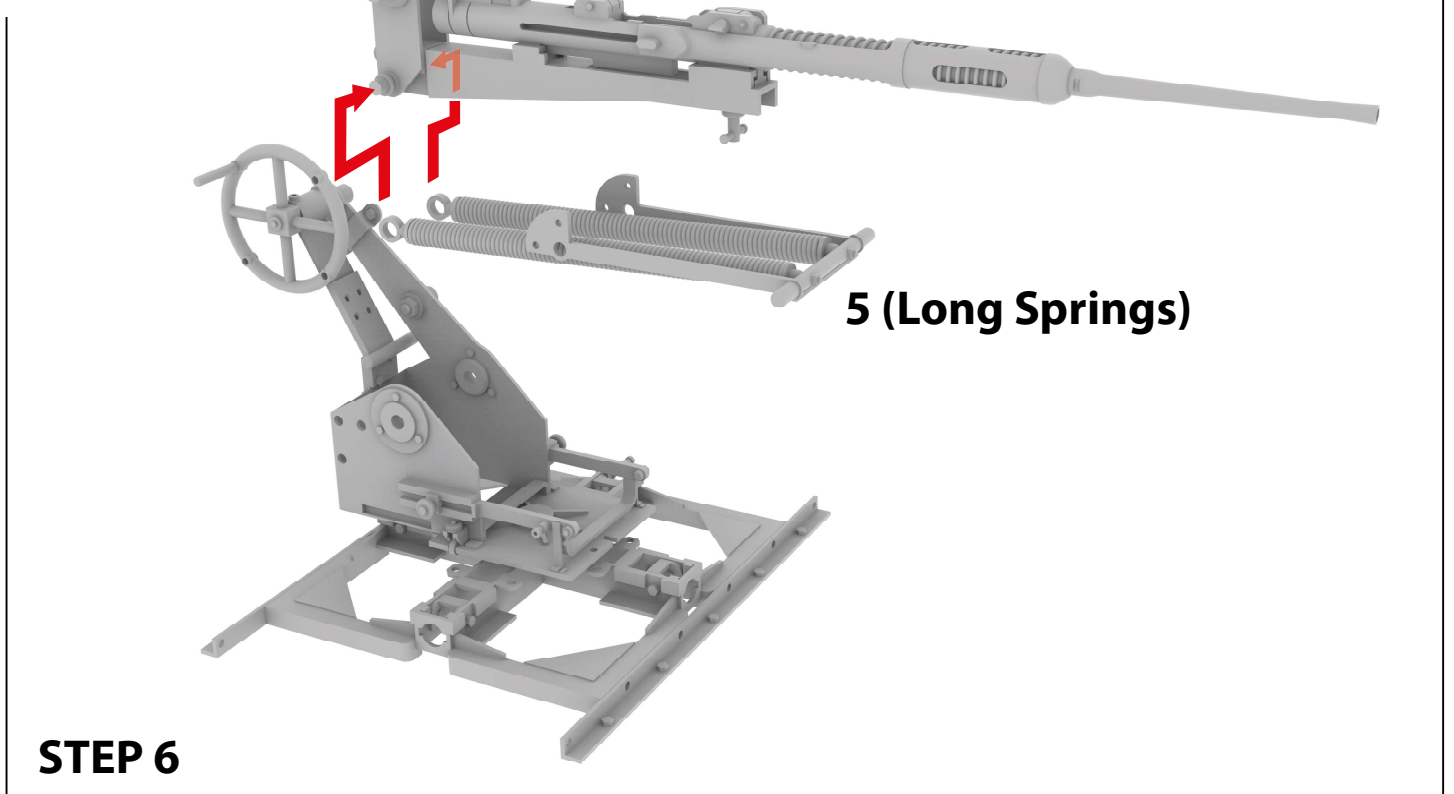


STEP 4

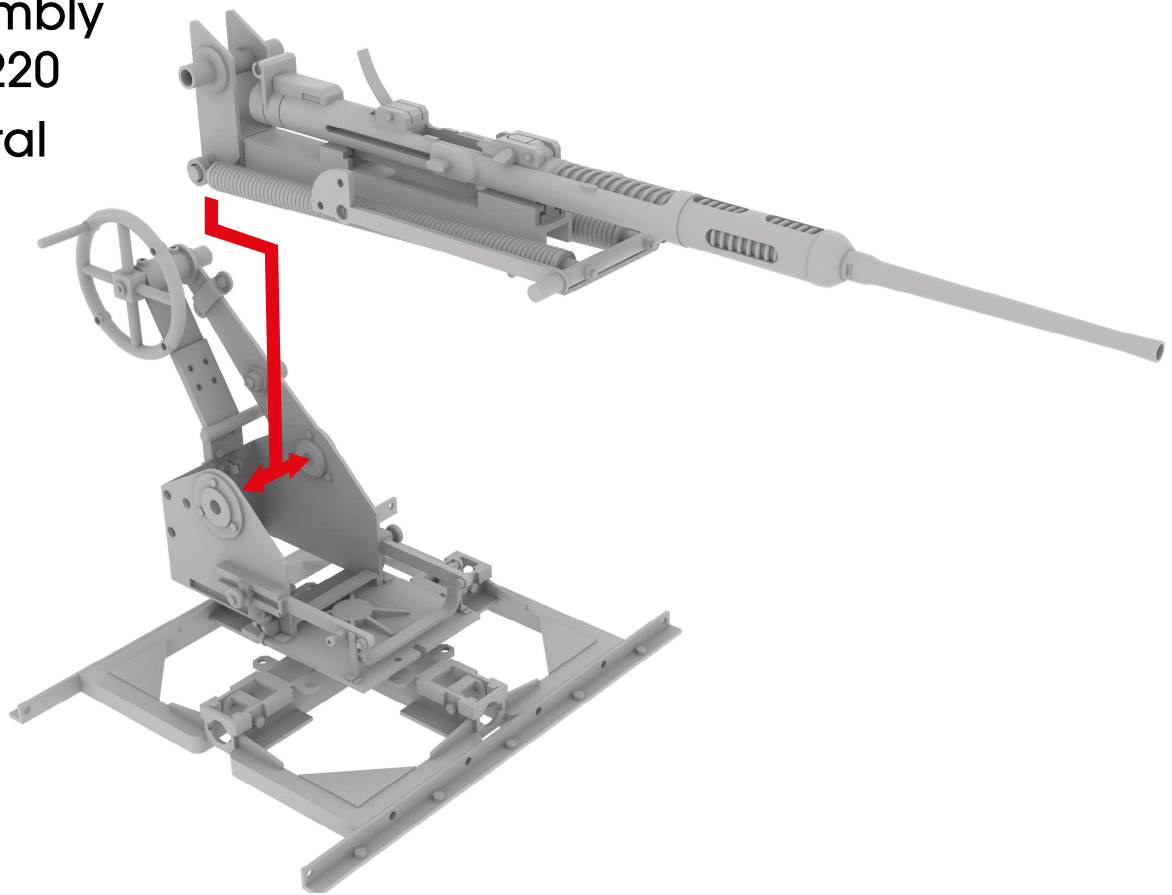
Kit Assembly
HDM35220



Horizontal
position

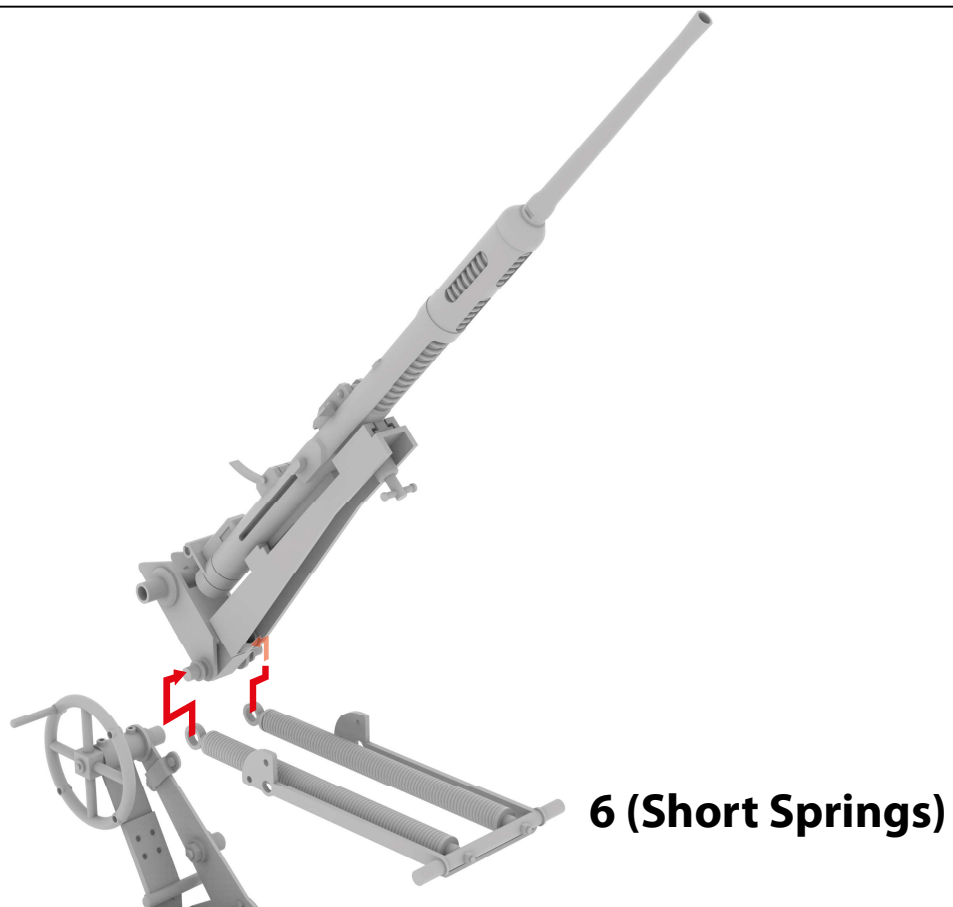


Kit Assembly
HDM35220
Horizontal
position



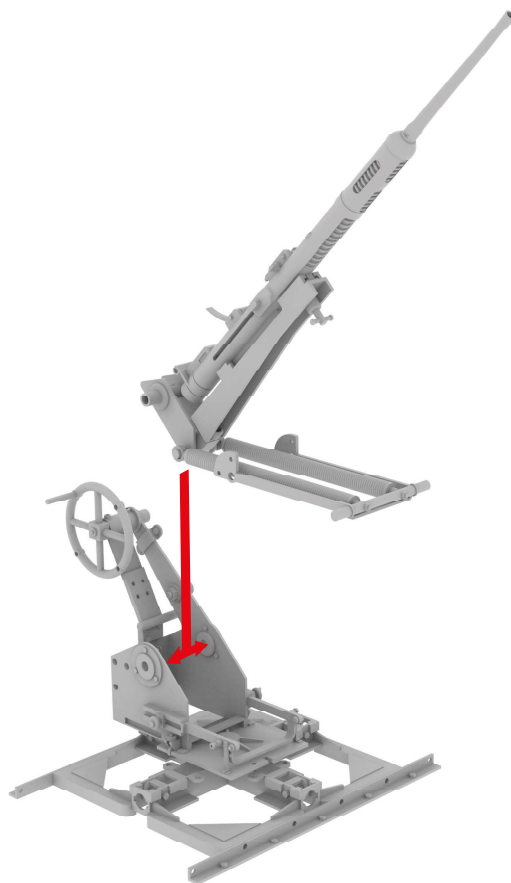
STEP 7

Inclined
position

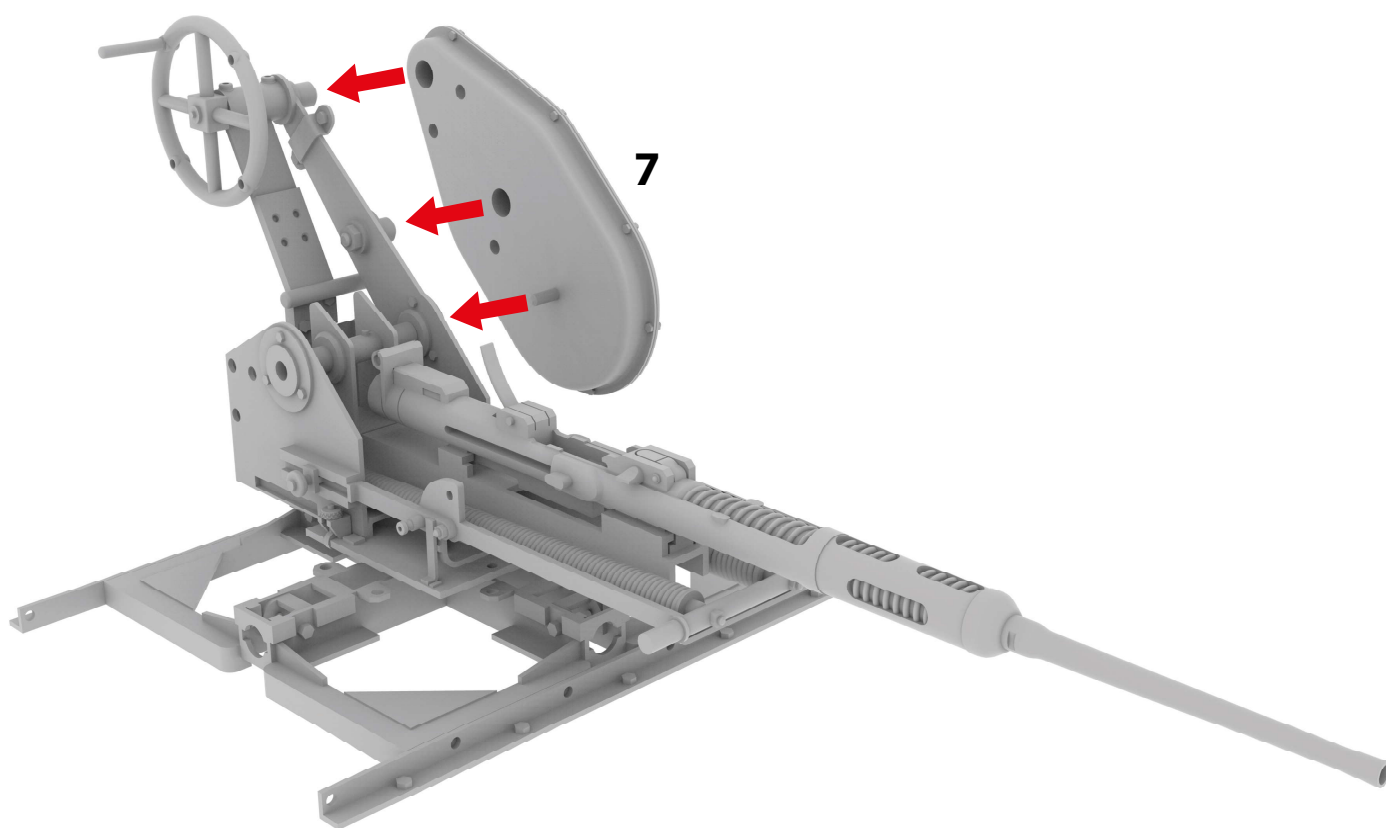


STEP 8

Kit Assembly
HDM35220
Inclined
position

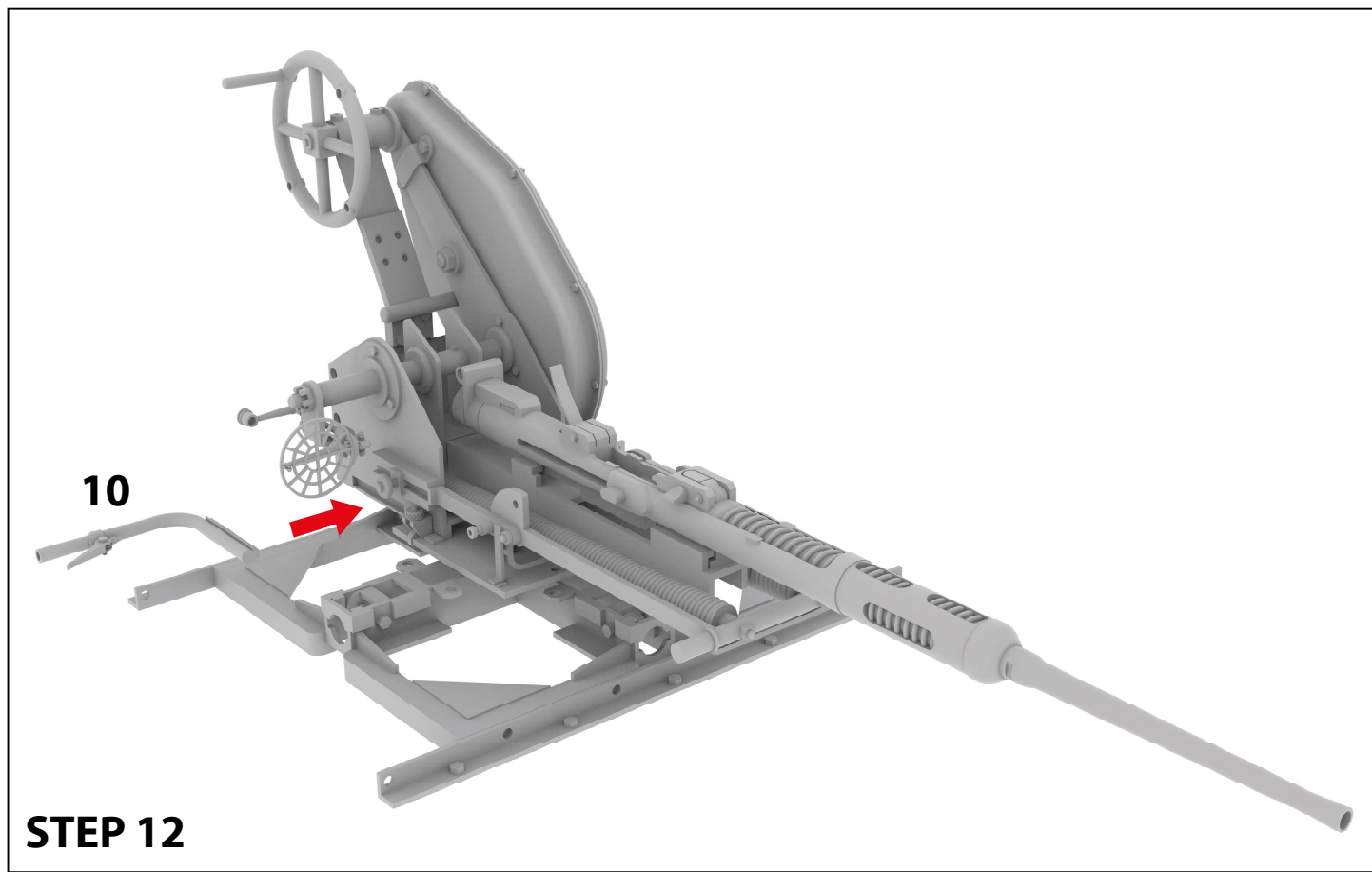
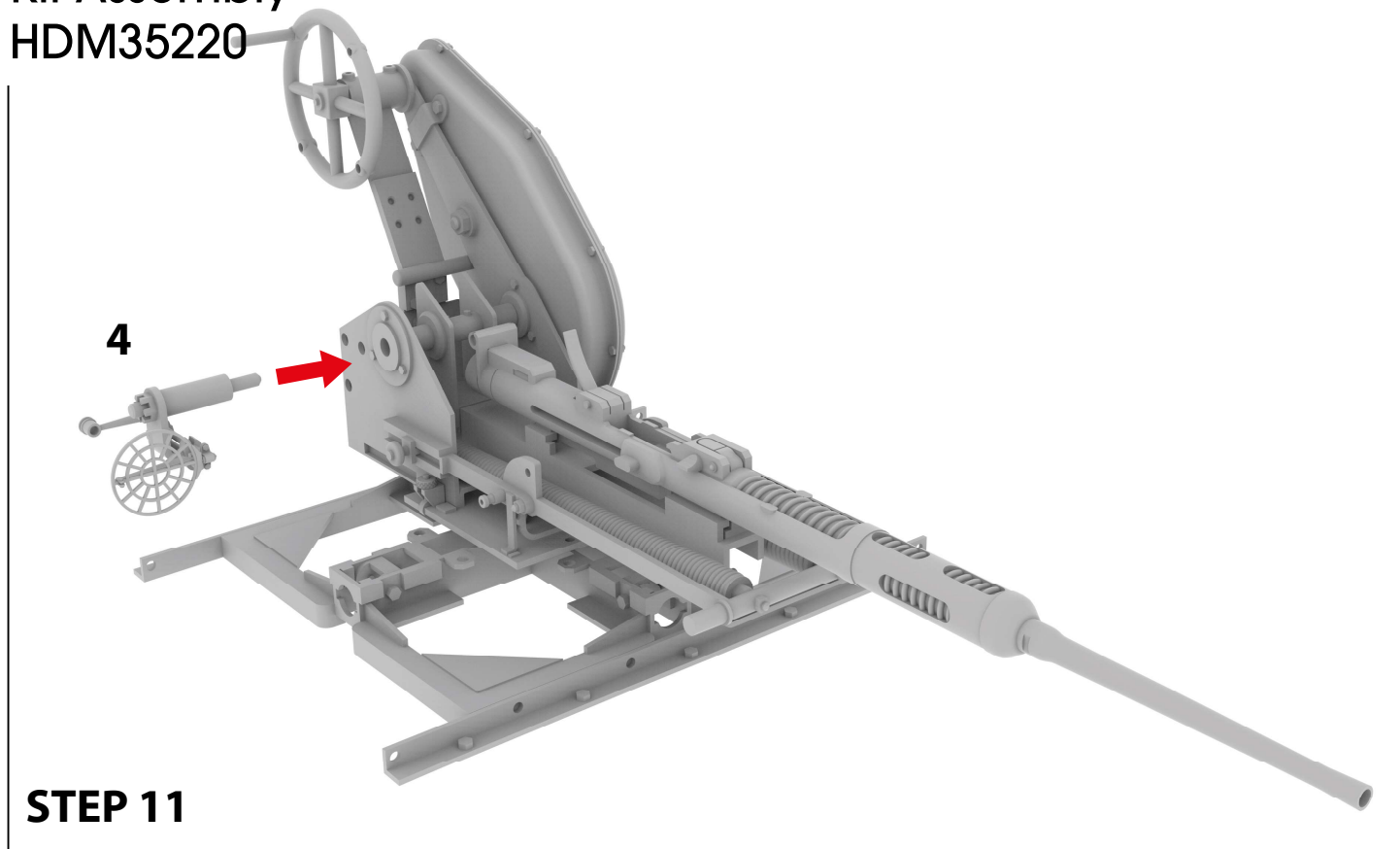


STEP 9

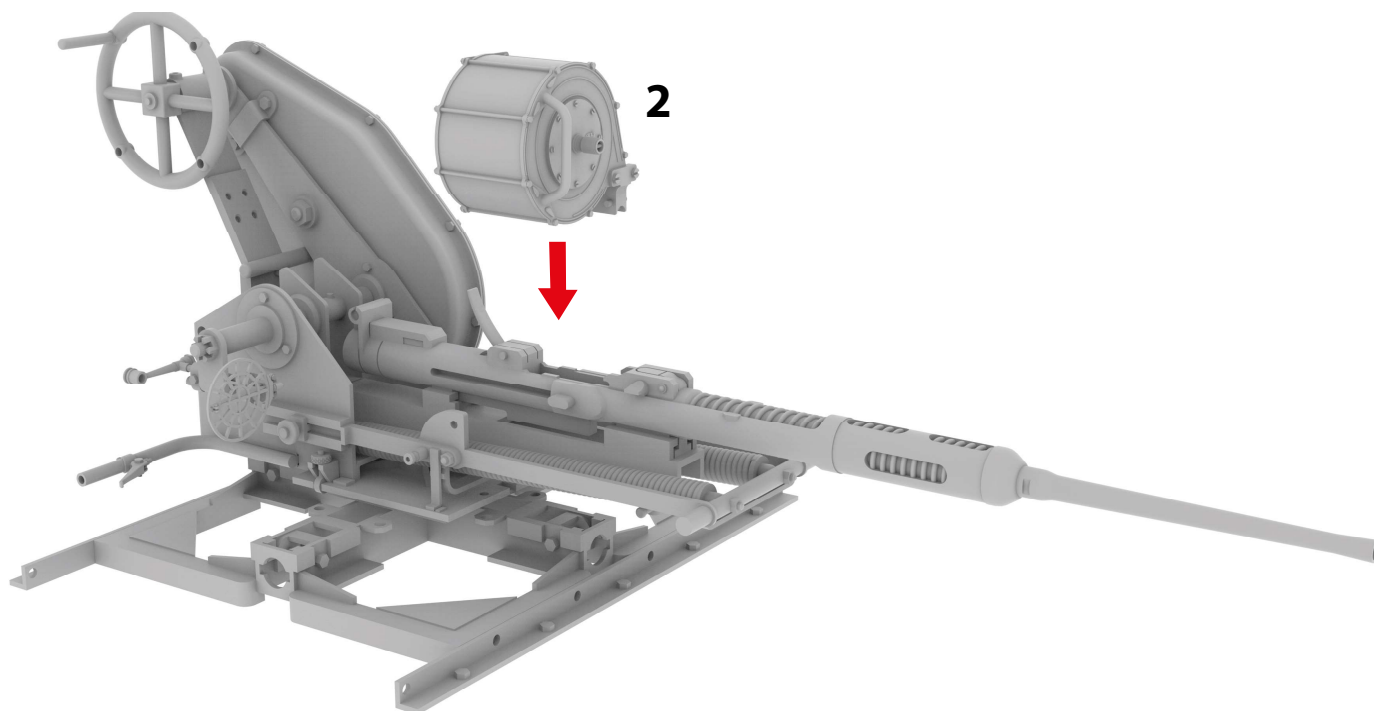


STEP 10

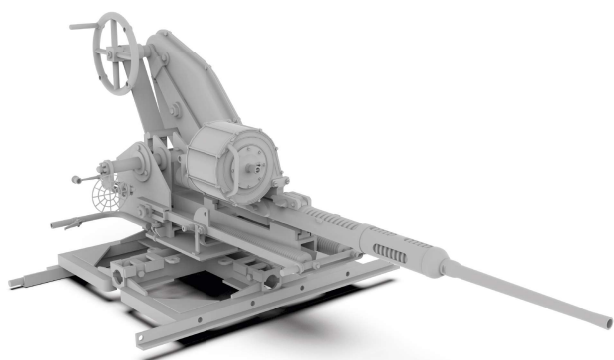
Kit Assembly
HDM35220



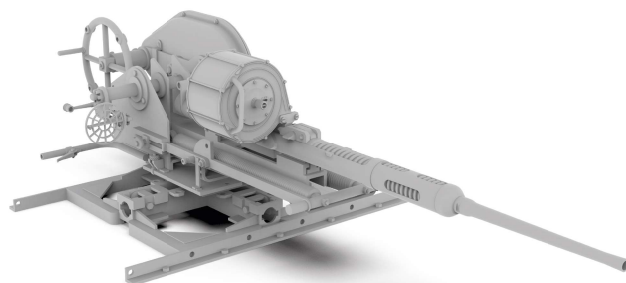
Kit Assembly
HDM35220



STEP 13



Normal
Version



Field
Modification



MODELS