



RAM Kangaroo

Gun tower, early/mid hull type

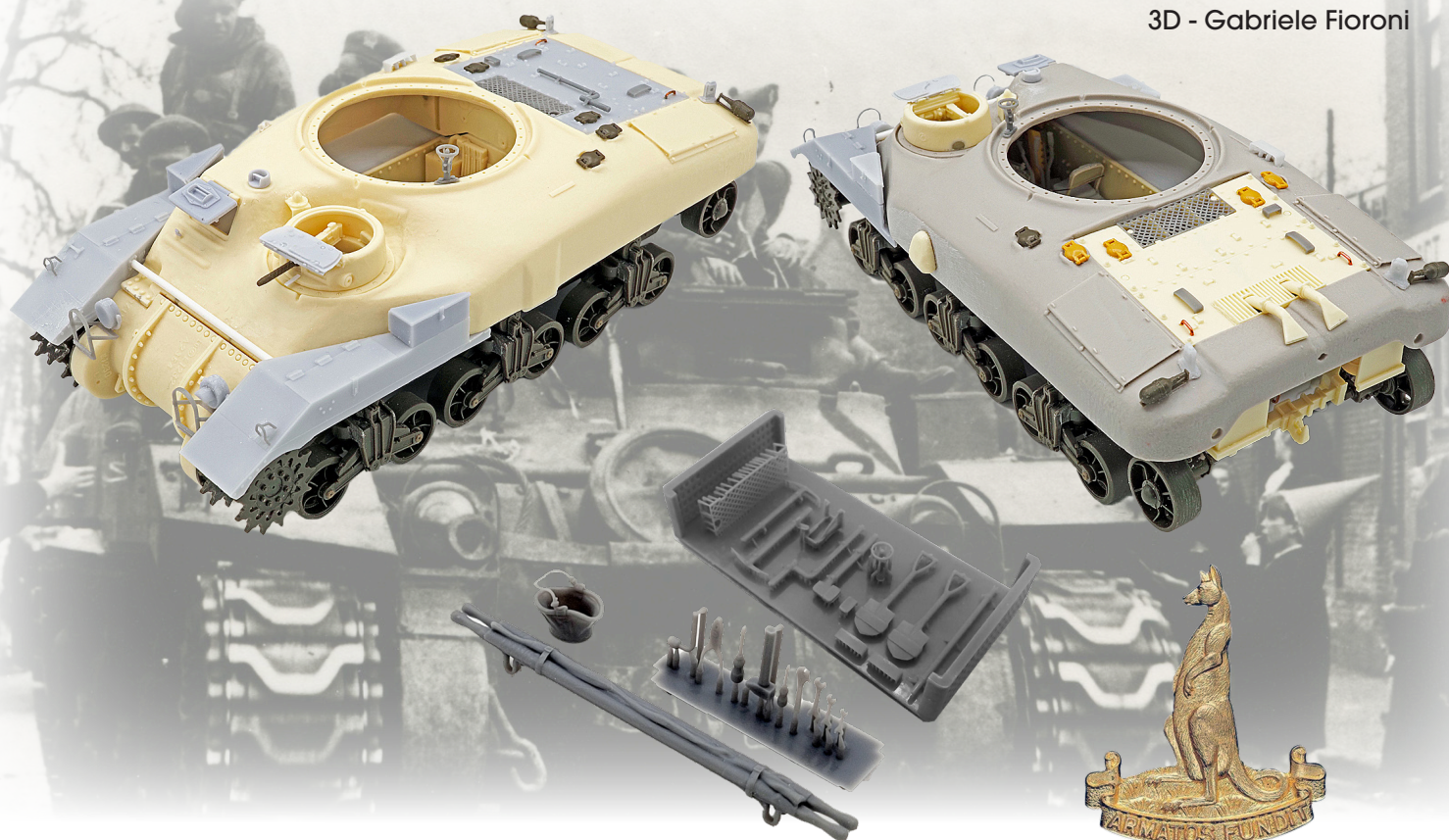
HDM35145

HD Models
Via Filippo Nicolai 24
00136 Roma—Italy

+39 06 39736835
info@hdmodels.it
www.hdmodels.it

1/35

Credits
Master - Fabio Sacchi
Artwork - Bill Miller
3D - Gabriele Fioroni



Resin scale model. This is not a toy. Kit is not recommended for children under 14 years of age.

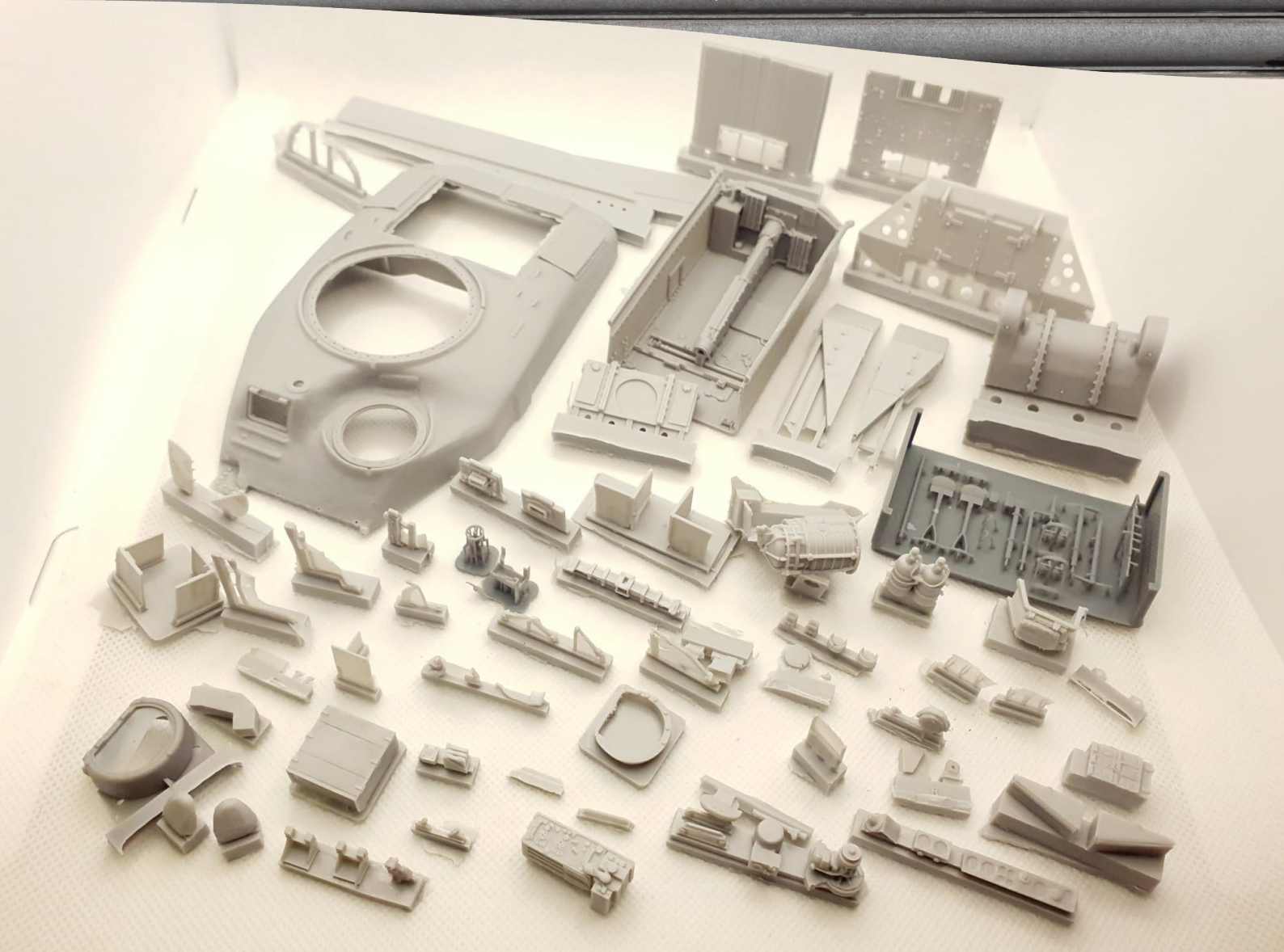
The kit contains resin parts and can only be used by experienced modelers. The kit needs assembly and painting and comes in separate pieces.

Applying tools and glue suitable for mounting resin parts.

Epoxy or cyanoacrylate is recommended. Working in ventilated spaces.

Beware the kit contains very small pieces that could be swallowed by children.

OLD GARAGE



6th Anti-Tank Regiment Ram Gun-Towers (marking based on Archival photos)

Artwork created by Bill Miller, 1st Canadian Armoured Carrier Regiment Archive
 Small: info@canadainlangue.ca • Facebook: Canadian Armoured Carrier Regiment Archive

103 Battery J/K/L Troops 4 Ram Towers per Troop	CT40146	CT40260	CT40165	CT40170	CT40323	CT40260
	CT40228	CT40123	CT40123	CT40257	CT40216	
74 Battery G/H/I Troops 4 Ram Towers per Troop						
4th Armoured Personnel Carrier Regiment K Squadron	CT-40703	ARMADILLO	ARMADILLO	CT 40703	CT 40703	CT 40703
	B8	CT-40856	B8	BLACKPOOL	BLACKPOOL	CT 40856
	32	CT-40189	32	COMET	COMET	CT 40189
	CT-40372	DIANA	DIANA	CT 40372	CT 40372	CT 40372
	CT-40458	MERLIN	MERLIN	CT 40458	CT 40458	CT 40458
	CT-40694	TARANTULA	TARANTULA	CT 40694	CT 40694	CT 40694

Dear Modeller. Thank you for having purchased a very limited run, multi media kit. We tried our best to ensure you will get a great kit and that you will enjoy it.

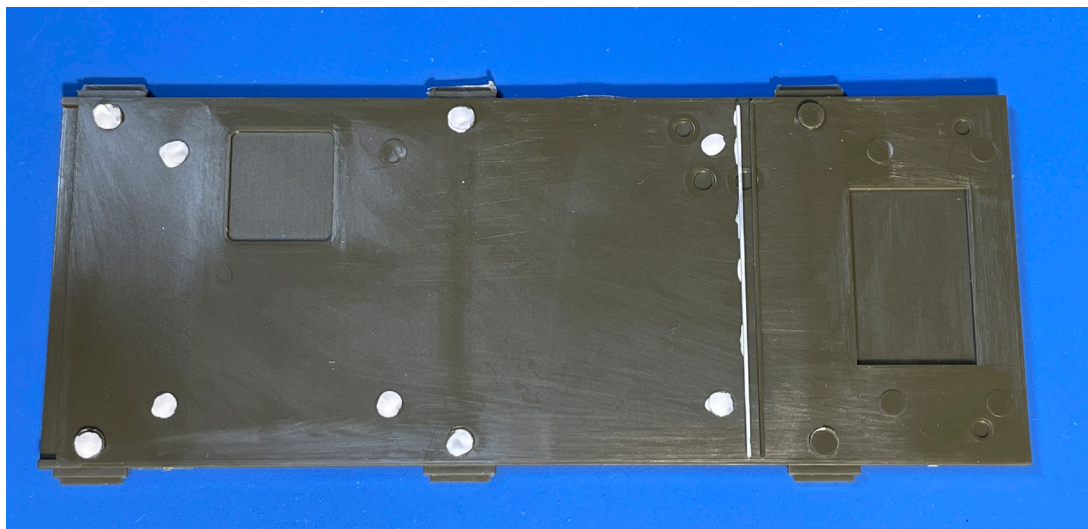
Work with resin parts



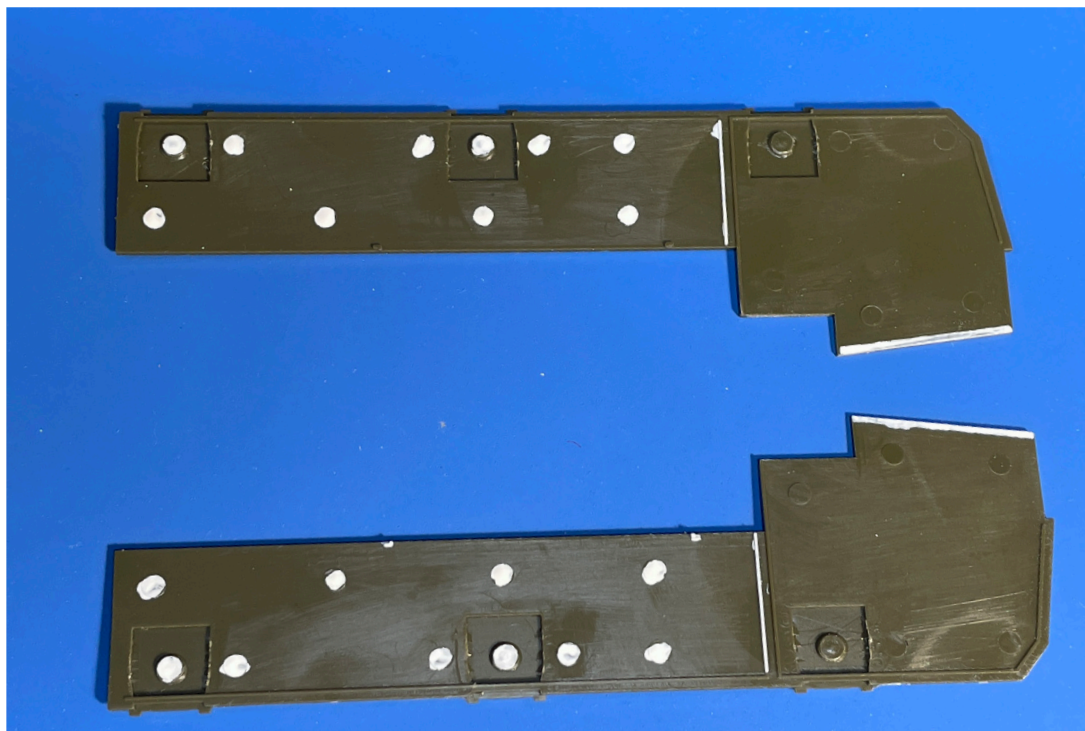
This kit has enhanced details by using 3d technology printed parts. To ensure a flawless removal of these parts from runners :

- 1) heat the resin parts with the hair dryer at a distance of 20cm for about 10 seconds
- 2) use our steel cut tweezers to remove or use a sharp blade

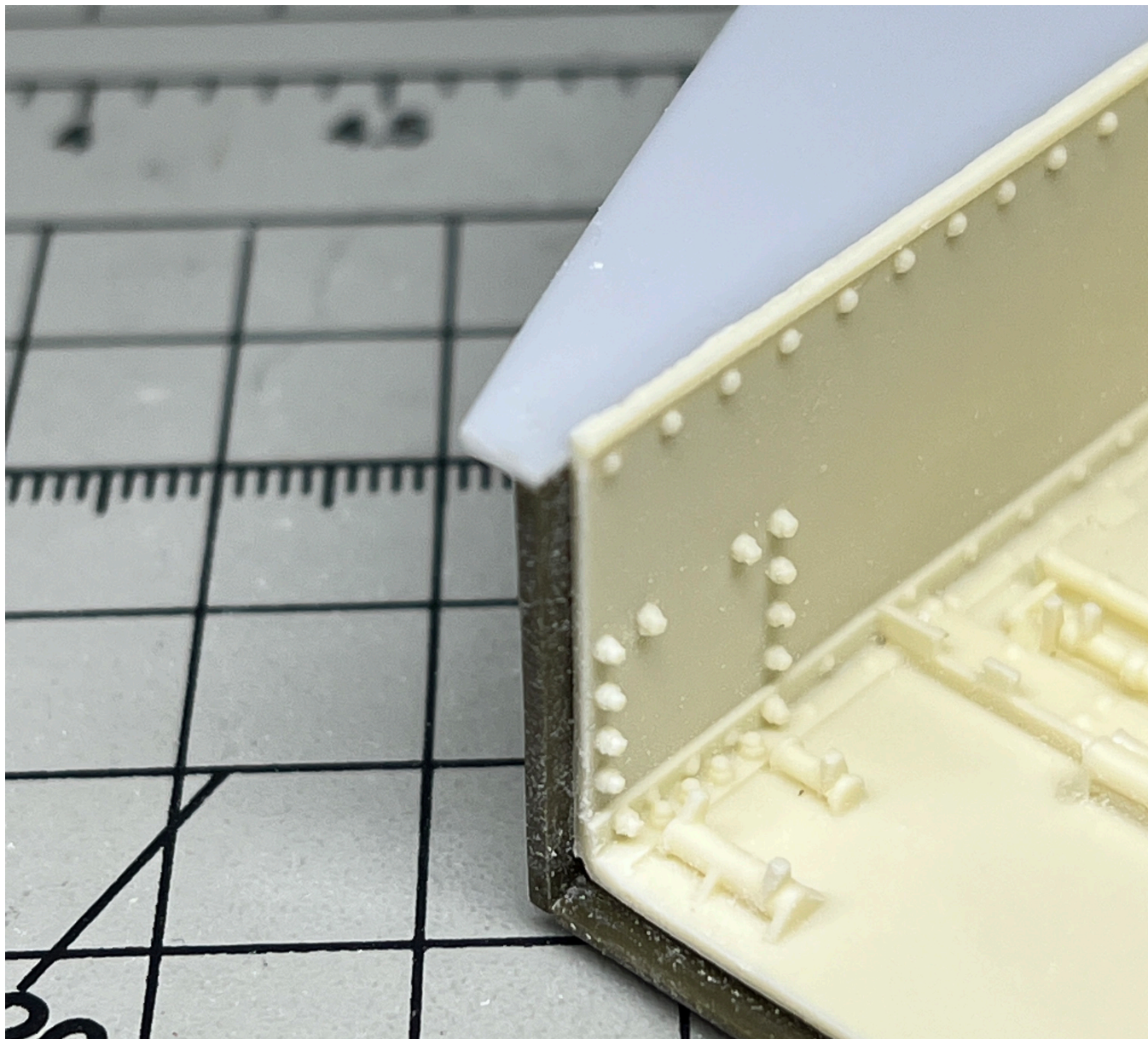
1) CUT FLUSH LOW HULL

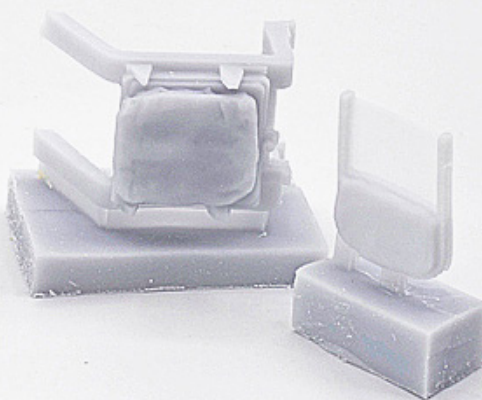


2) CUT FLUSH SIDE HULLS

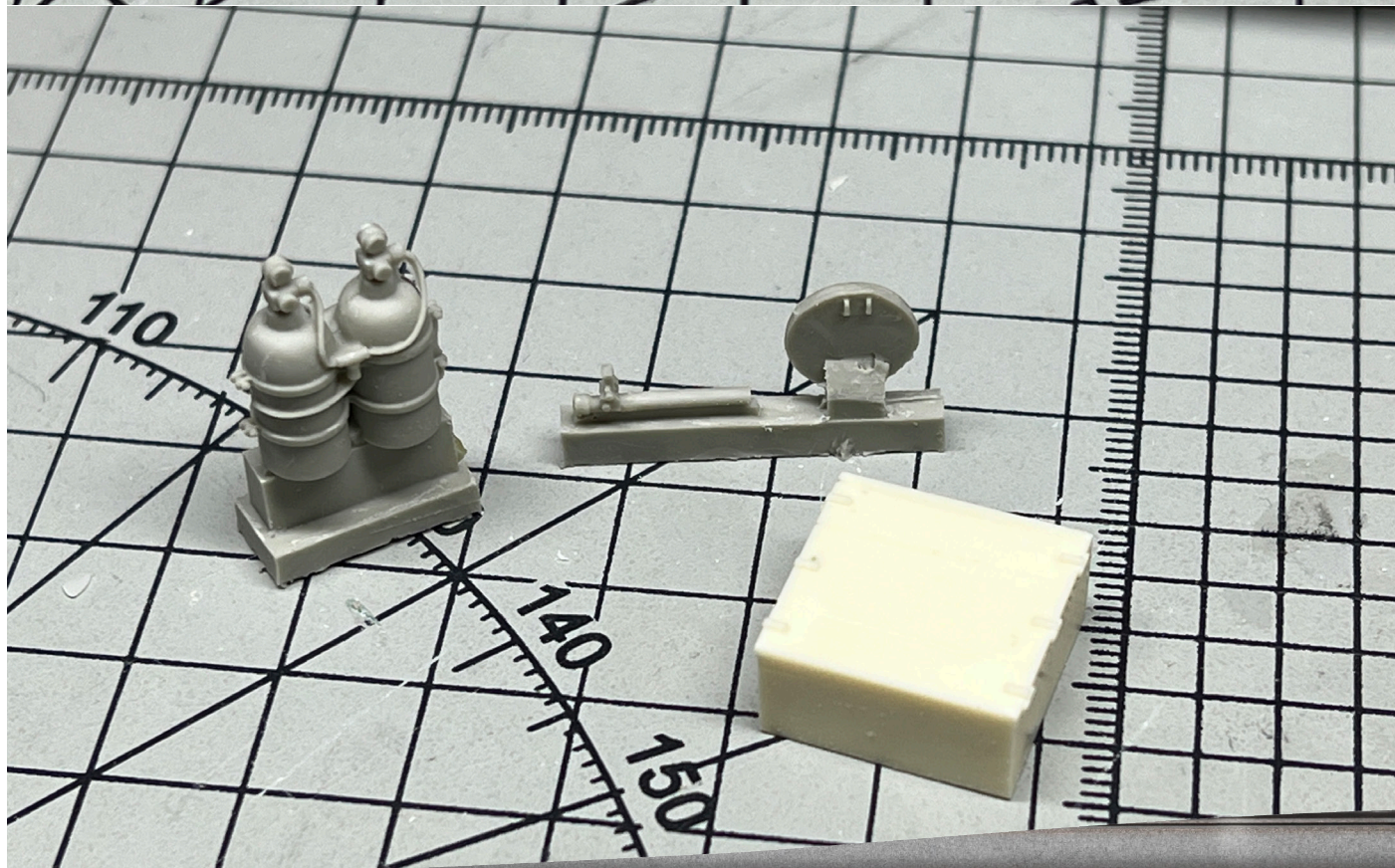
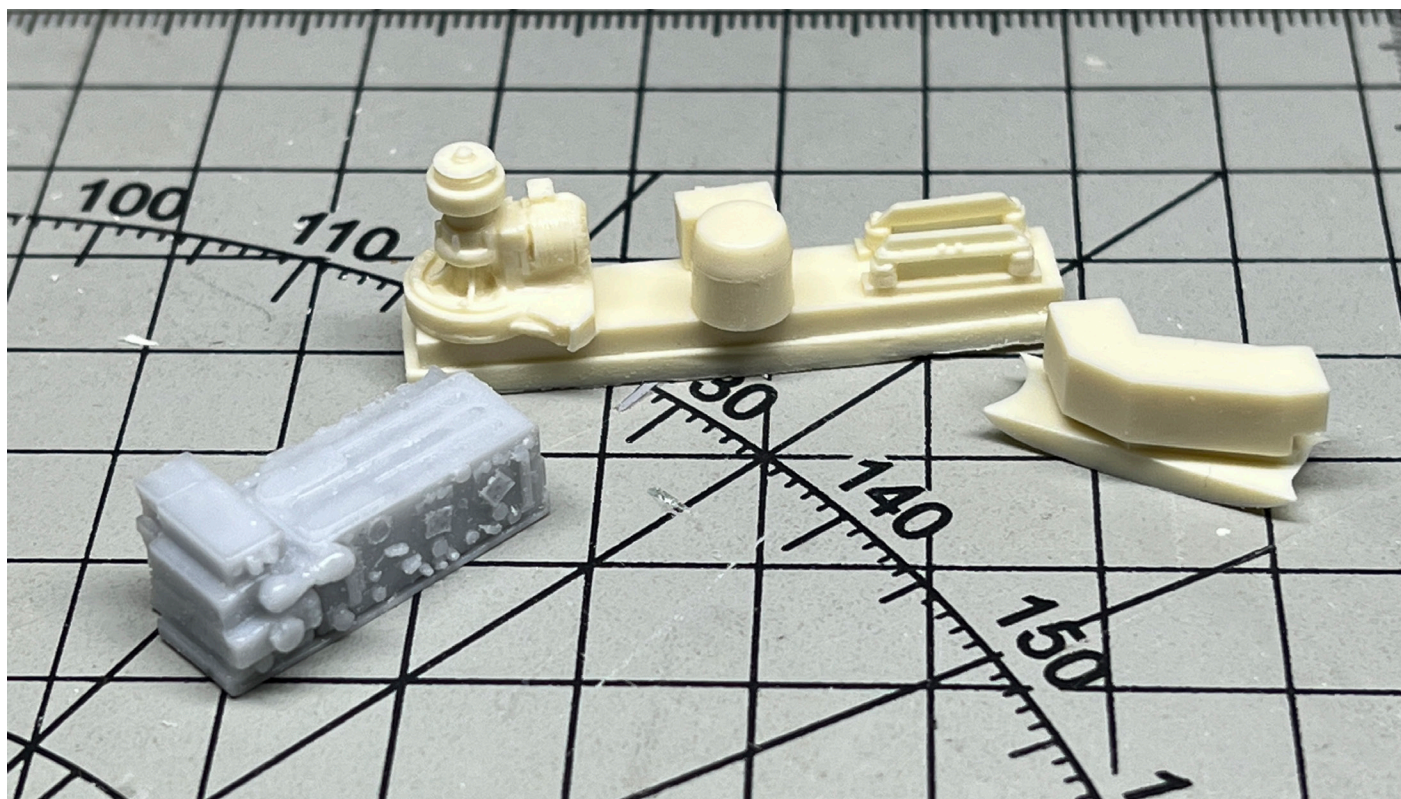


2) CUT FLUSH WITH VERTICAL HULL SIDE



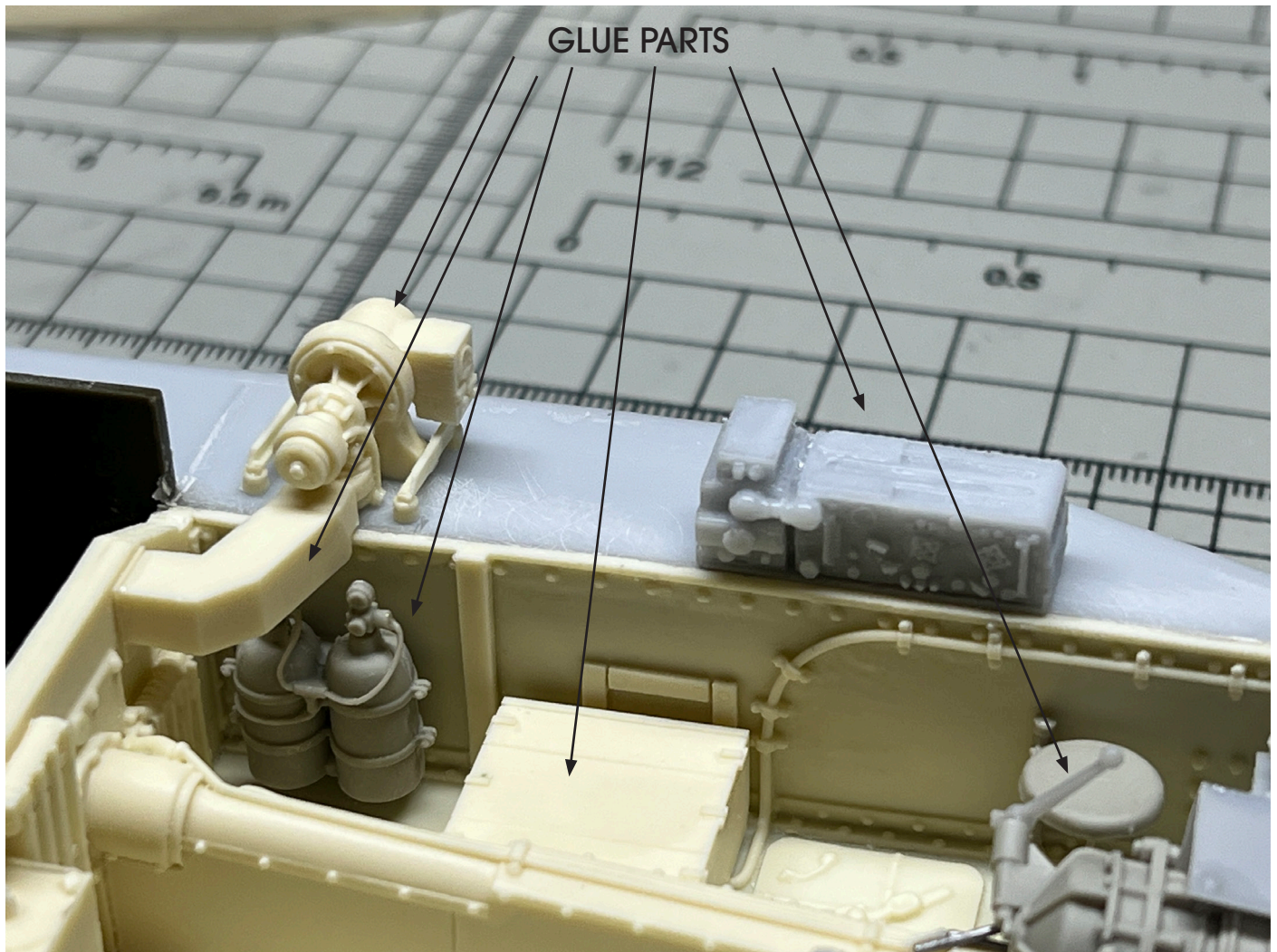
[illegible]

INTERIOR HULL PARTS

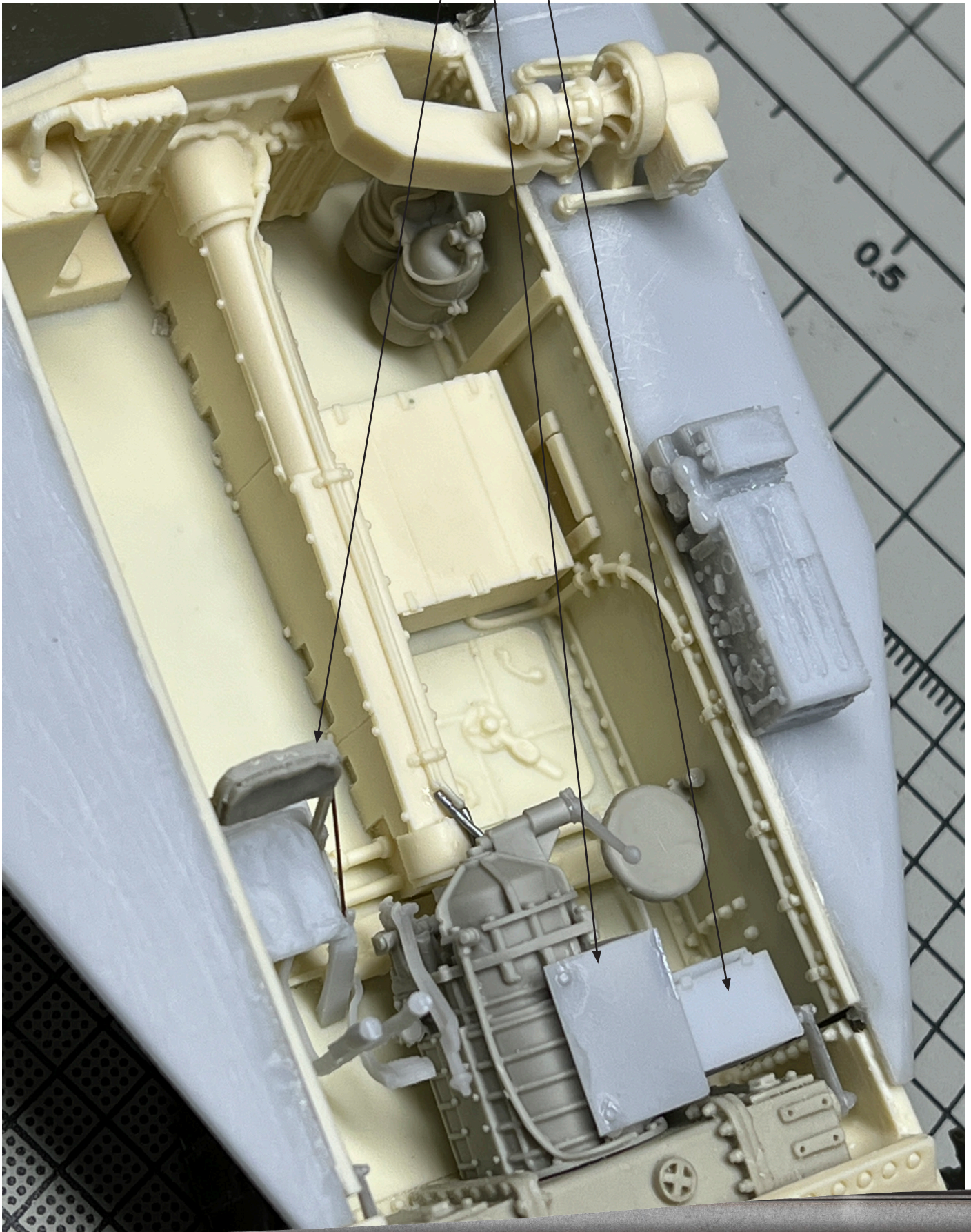


5) INTERIOR HULL

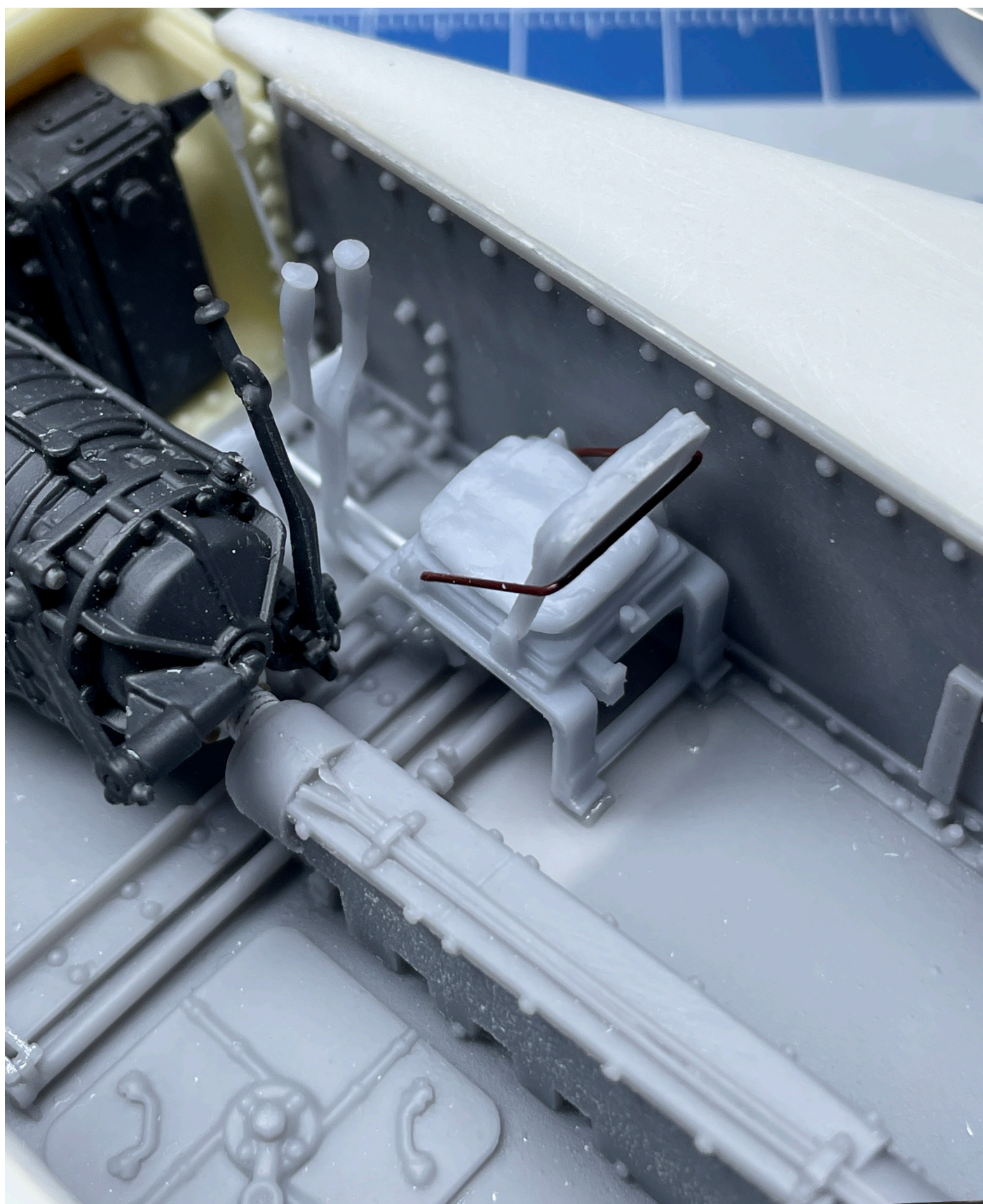
if you want more details you can add lead wire



GLUE PARTS

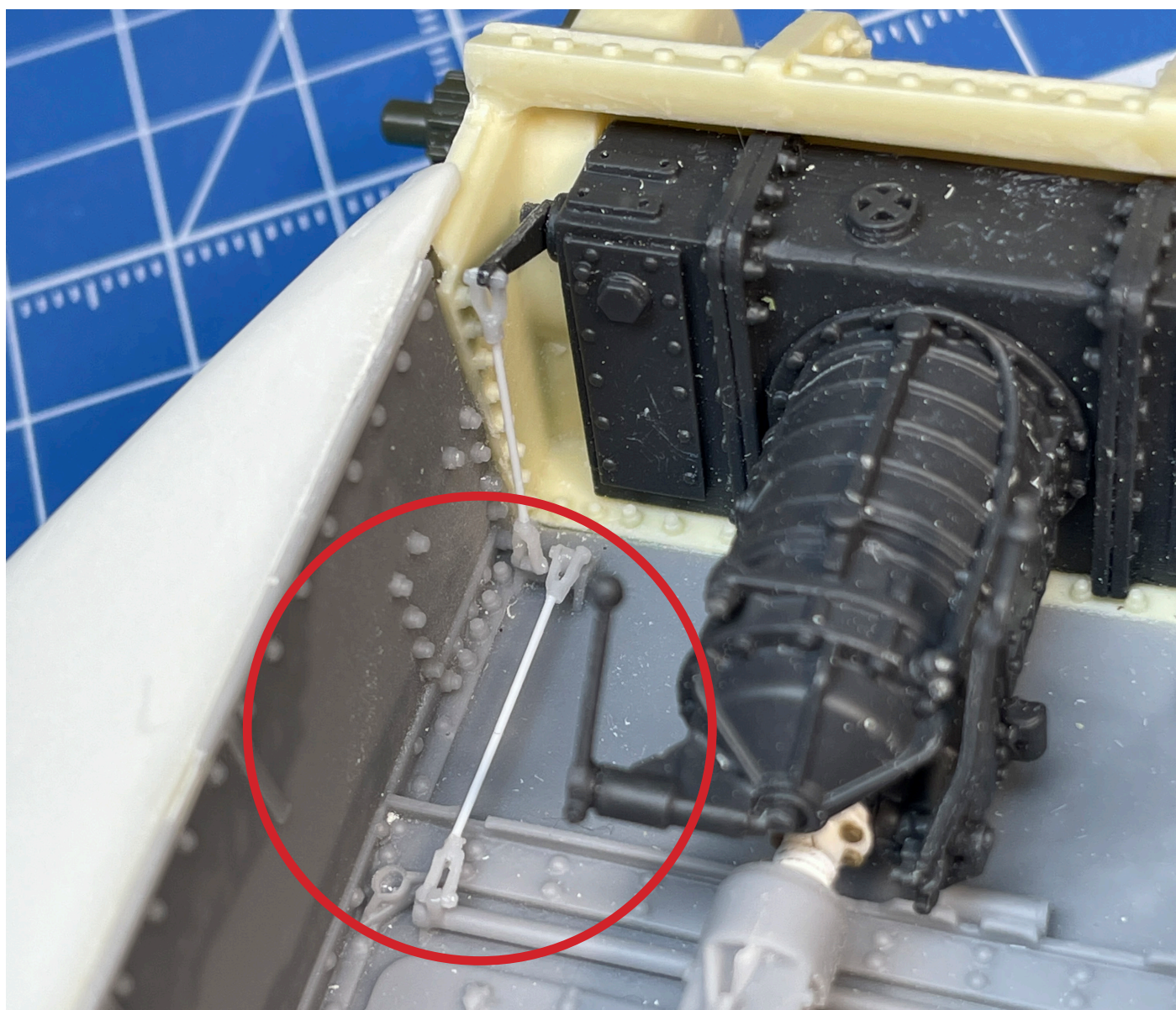


7) INTERIOR HULL - DRIVER SIDE VIEW

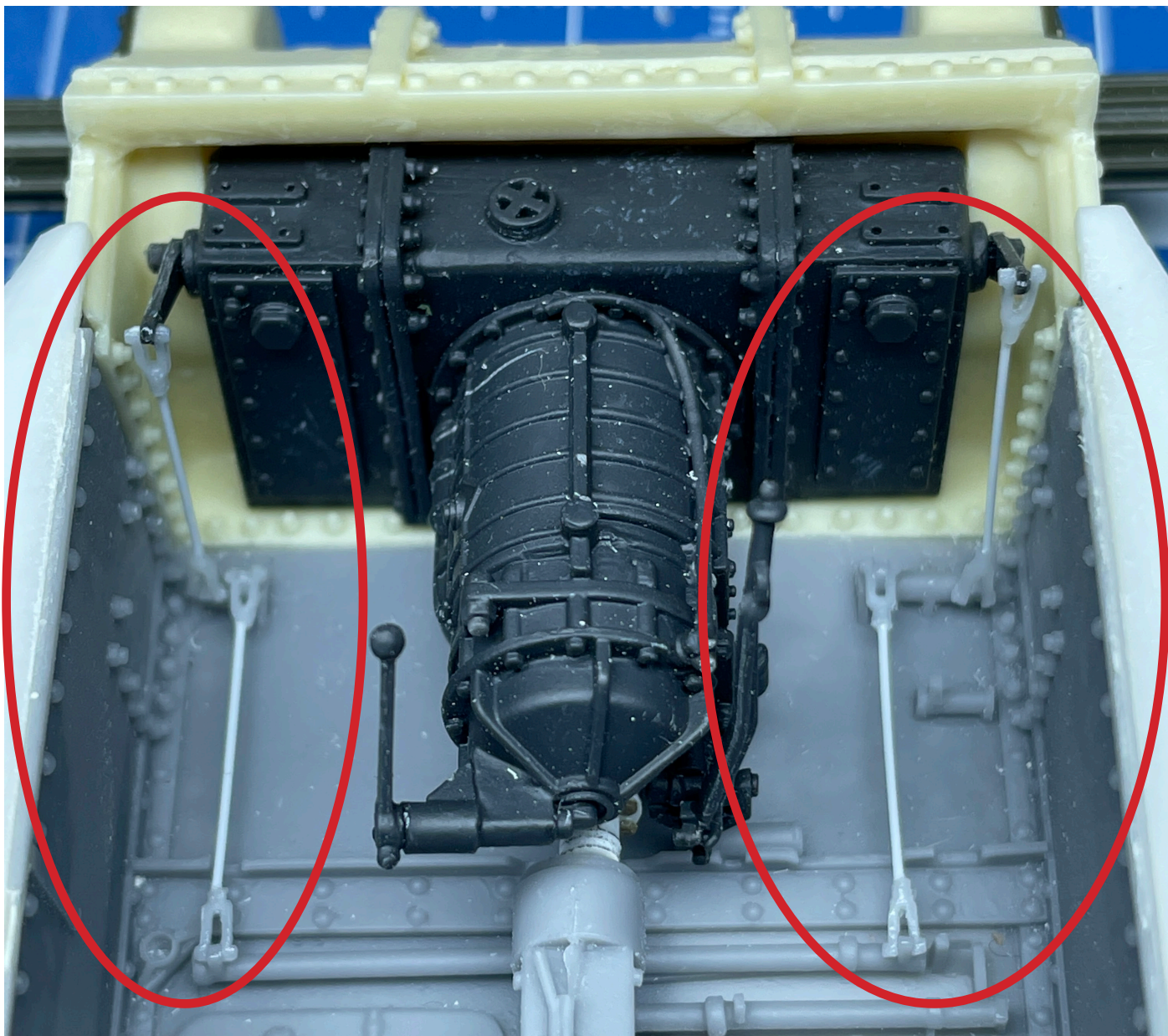


If you want more details you can add steering levers using resin caps and 0,3 rod or stretched sprue

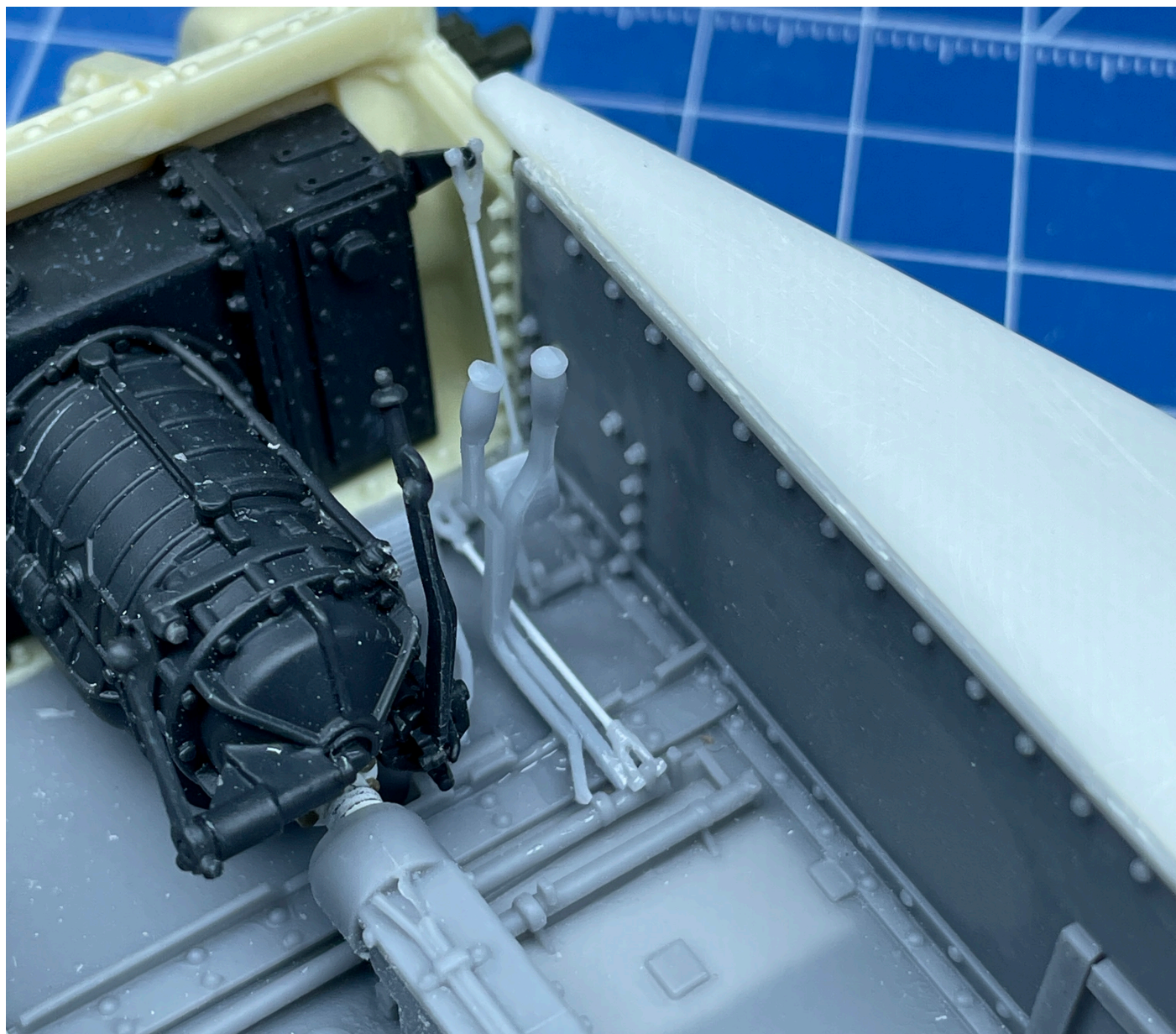




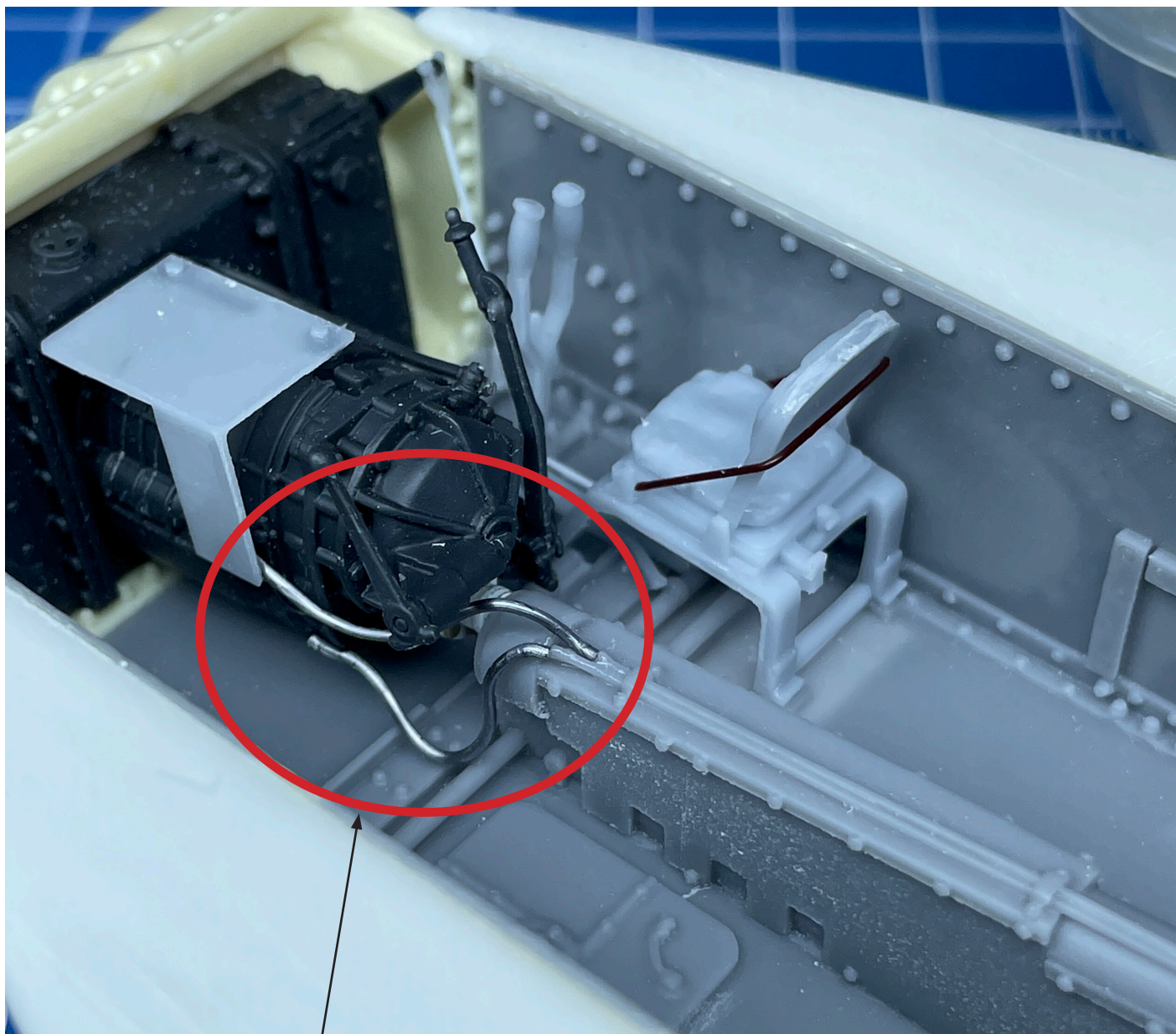
STEERING LEVERS



STEERING LEVERS

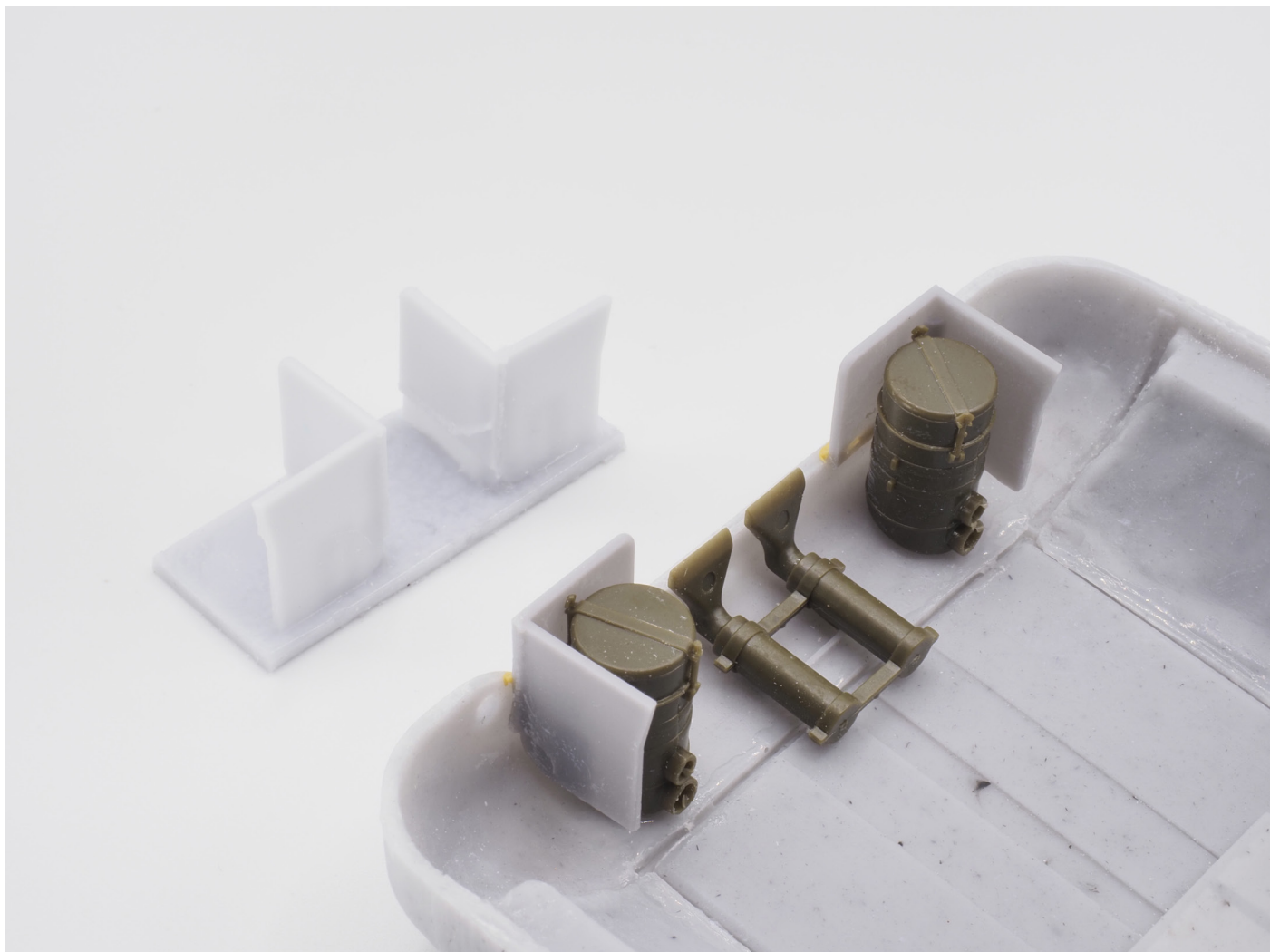


VIEW OF STEERING LEVERS WITH
COMAND DRIVE LEVERS



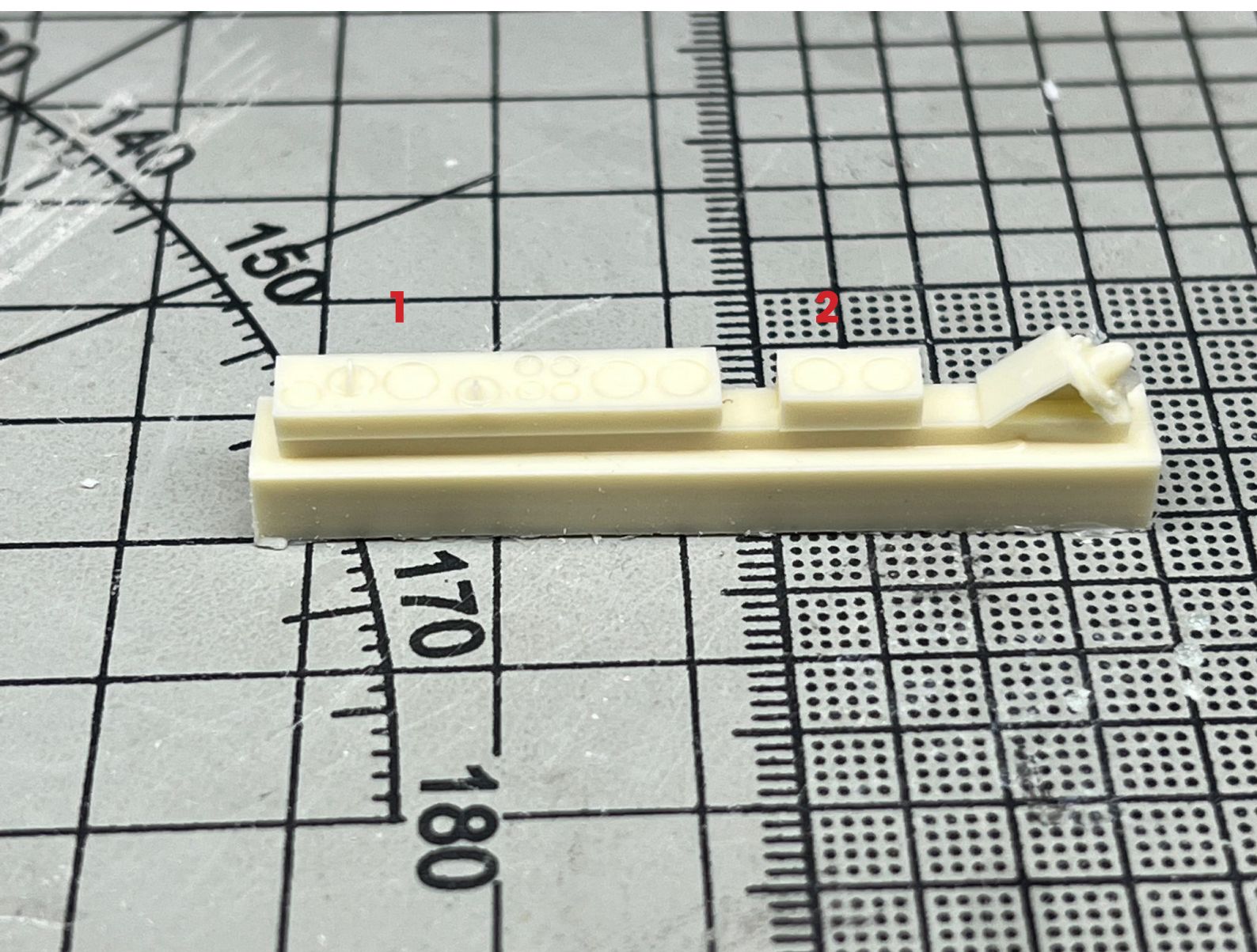
ADD LEAD WIRE

TAKE UPPER HULL RESIN PART AND TURN IT OVER AND GO TO THE BACK.
THEN GLUE PLASTIC PARTS AND ADD COVER RESIN PARTS
“ CHECK ALTERNATE PIECES FOR DEEP WADING SET PREPARATION”

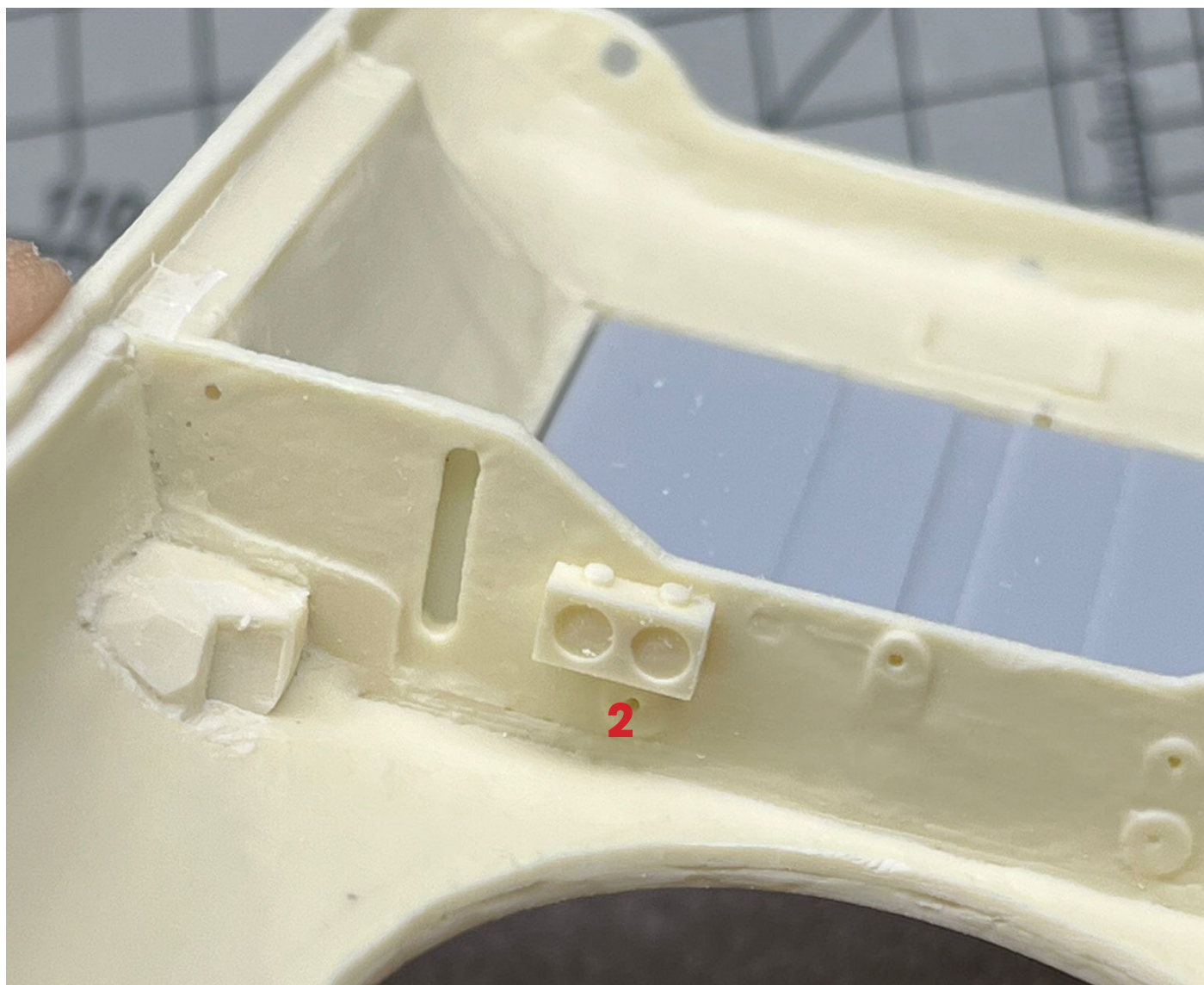


Driver gauges and batteries voltage meters position

Part list



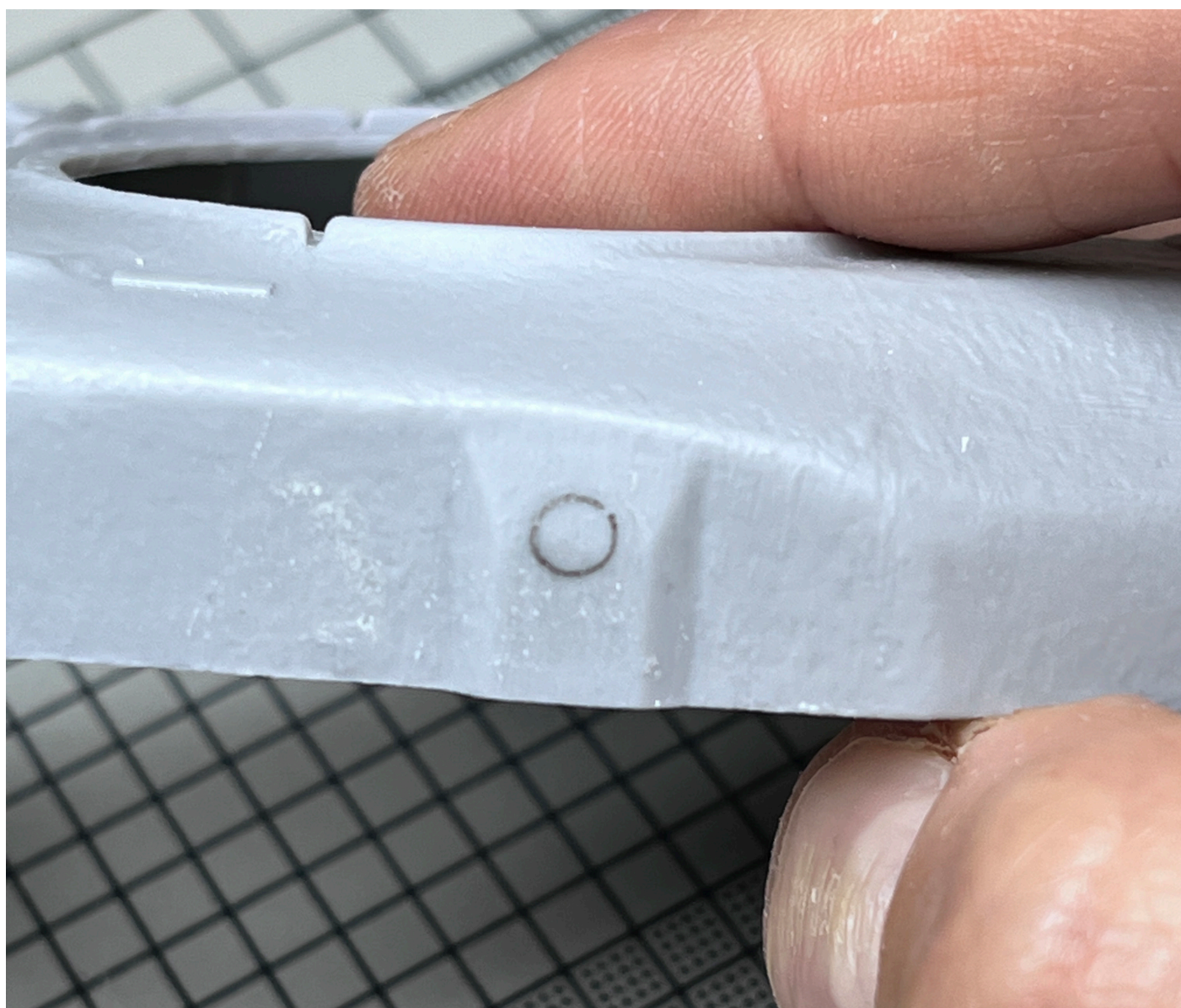


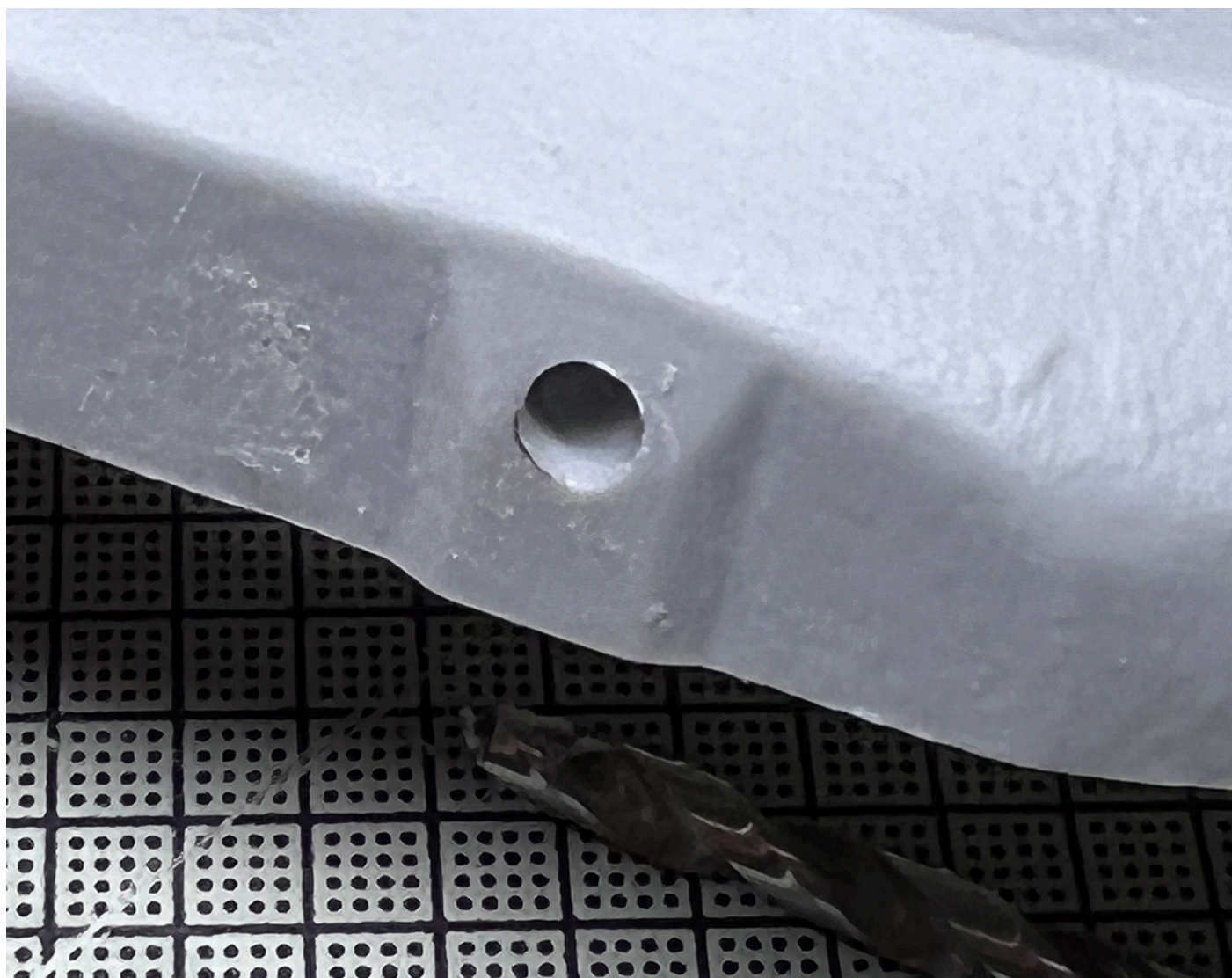


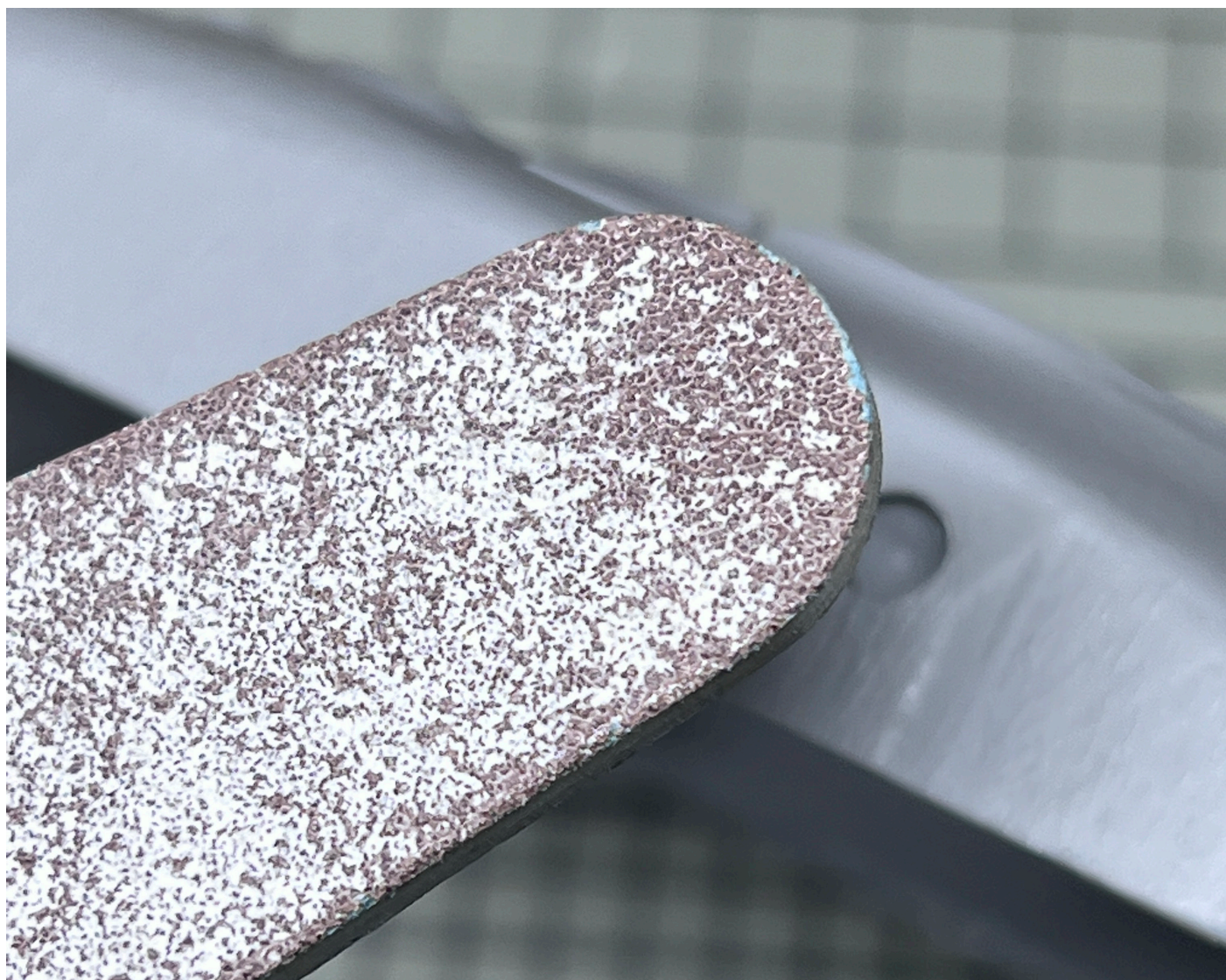
HOW TO MODIFY HULL FOR EARLIER VERSION AIR BLOWERS

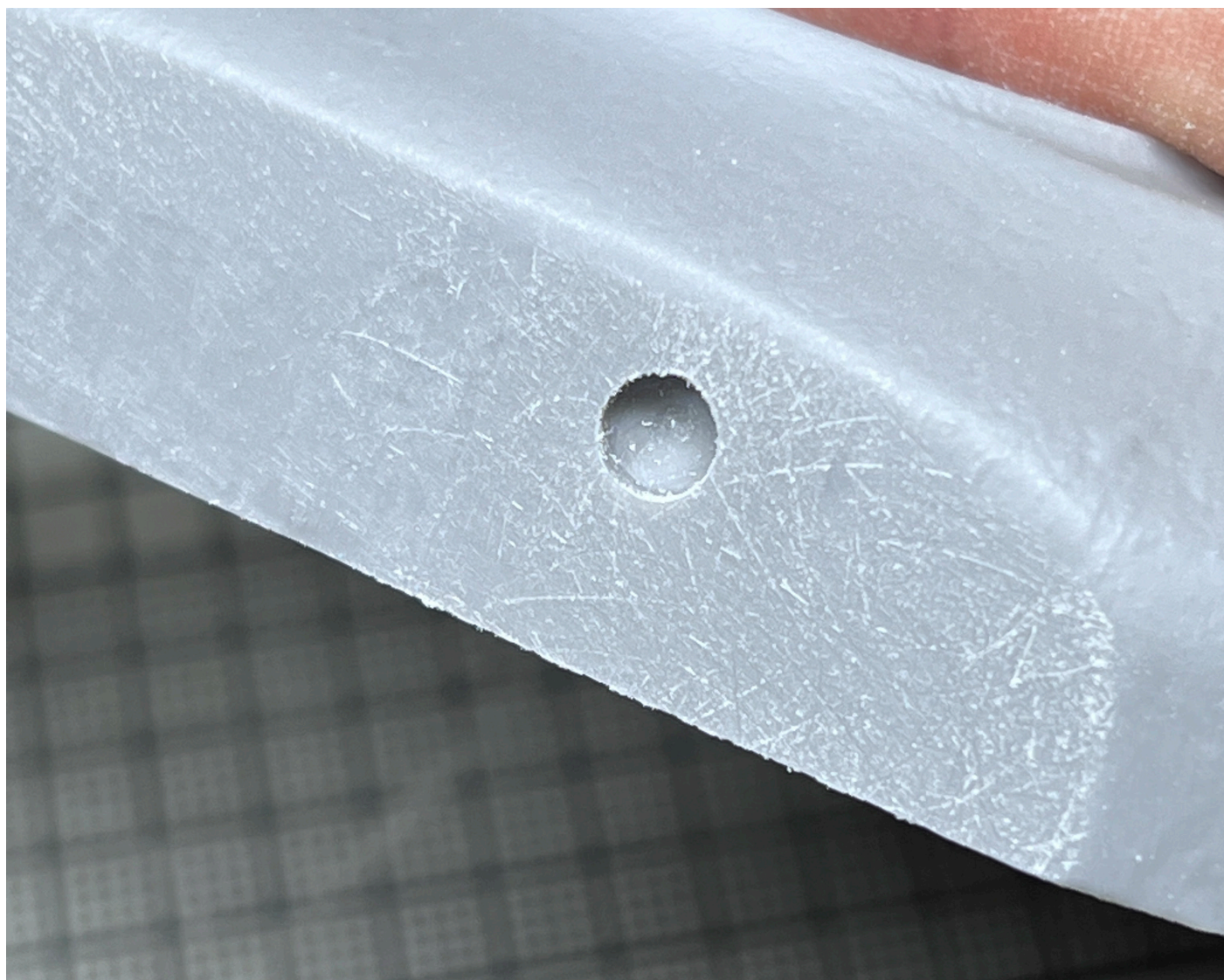


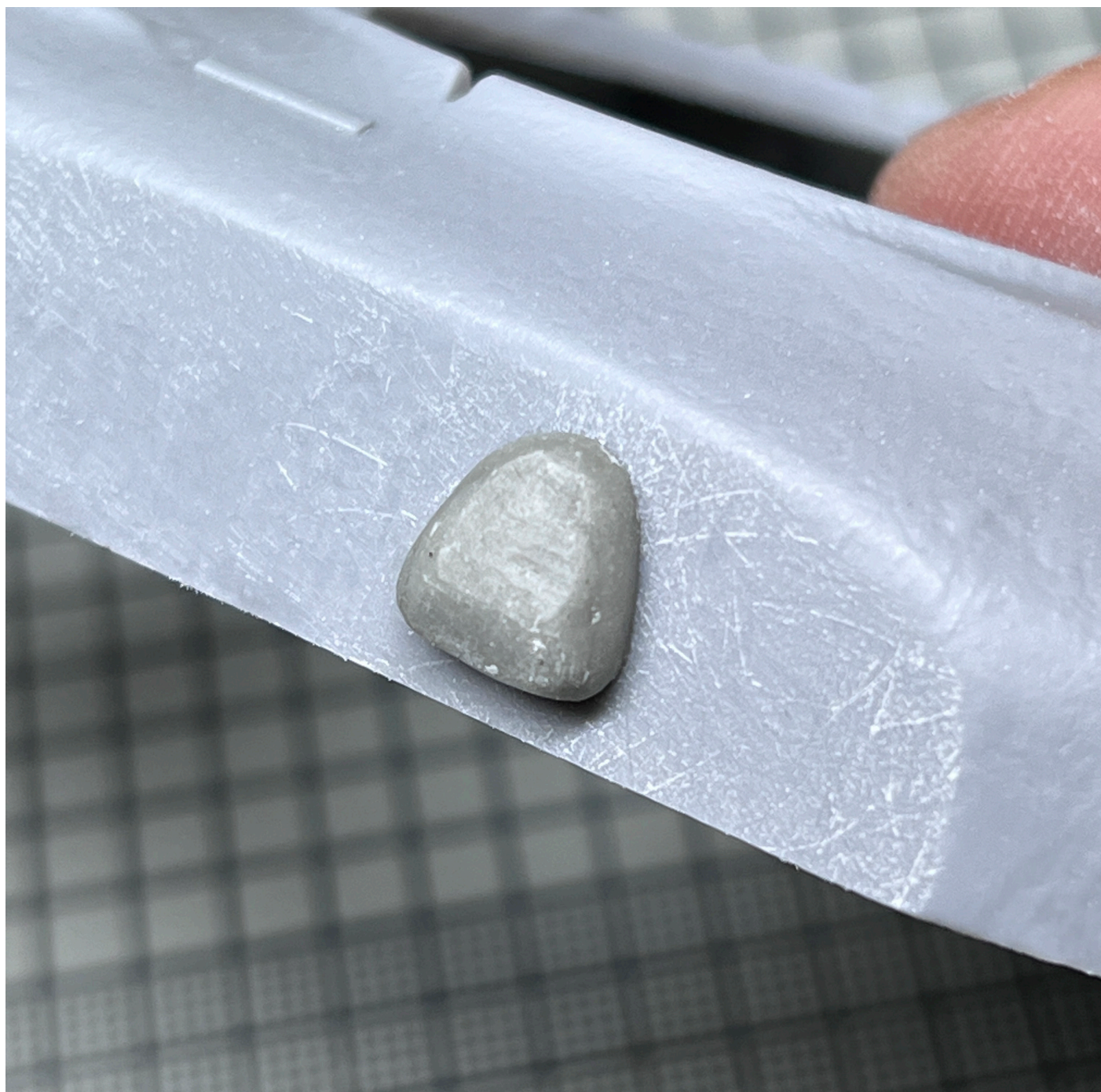
Use guide tool resin part to drill the hole



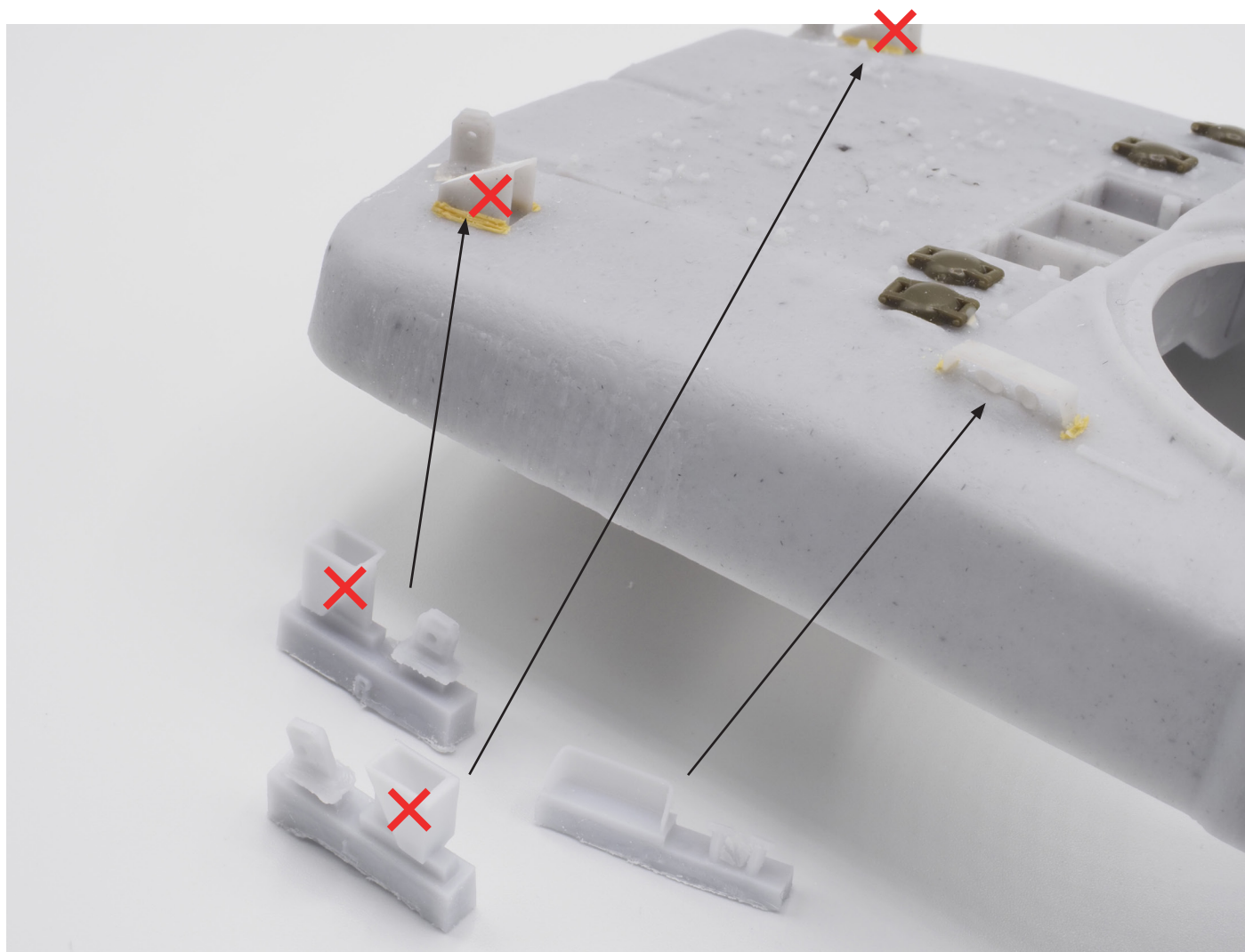




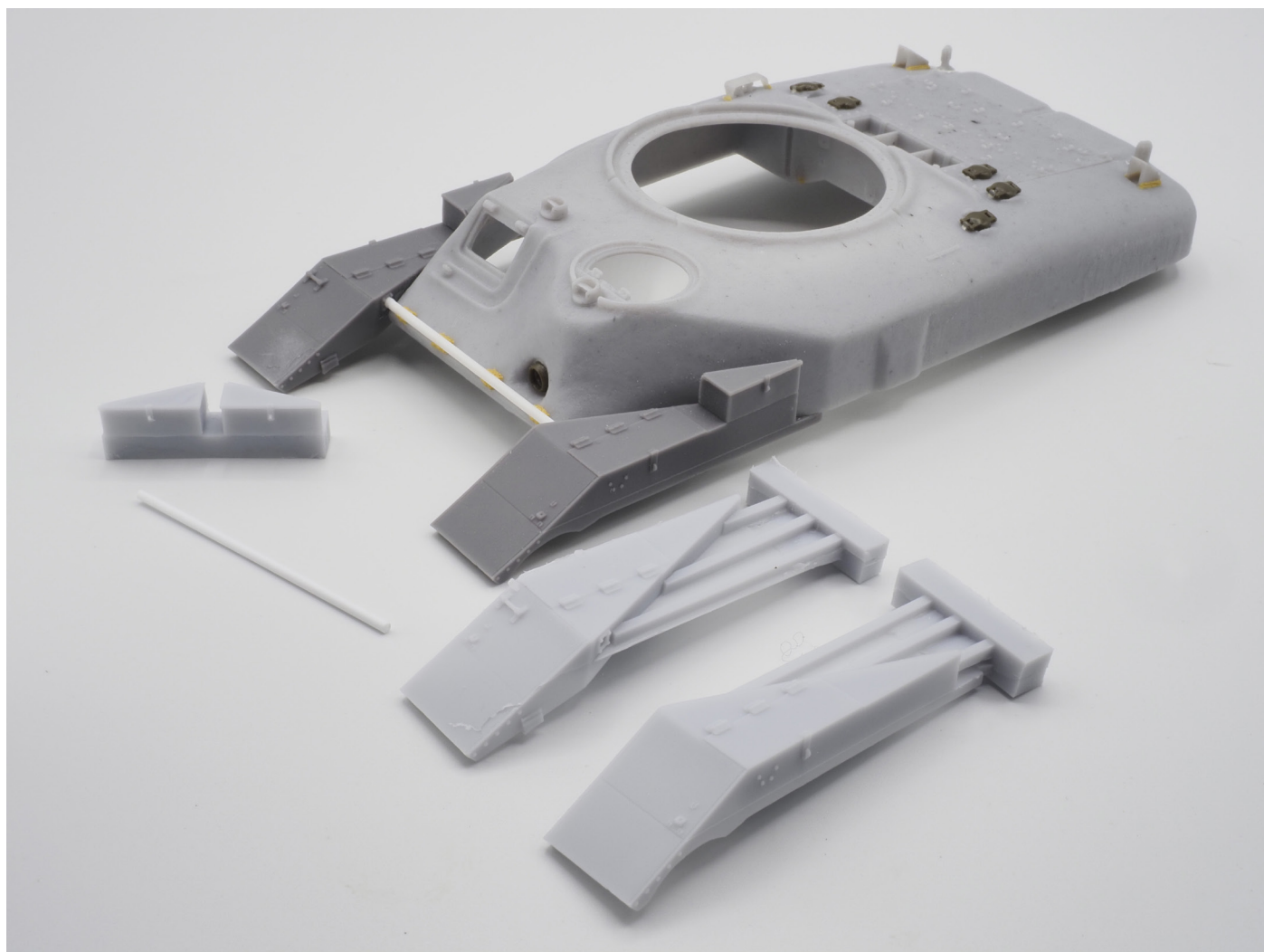




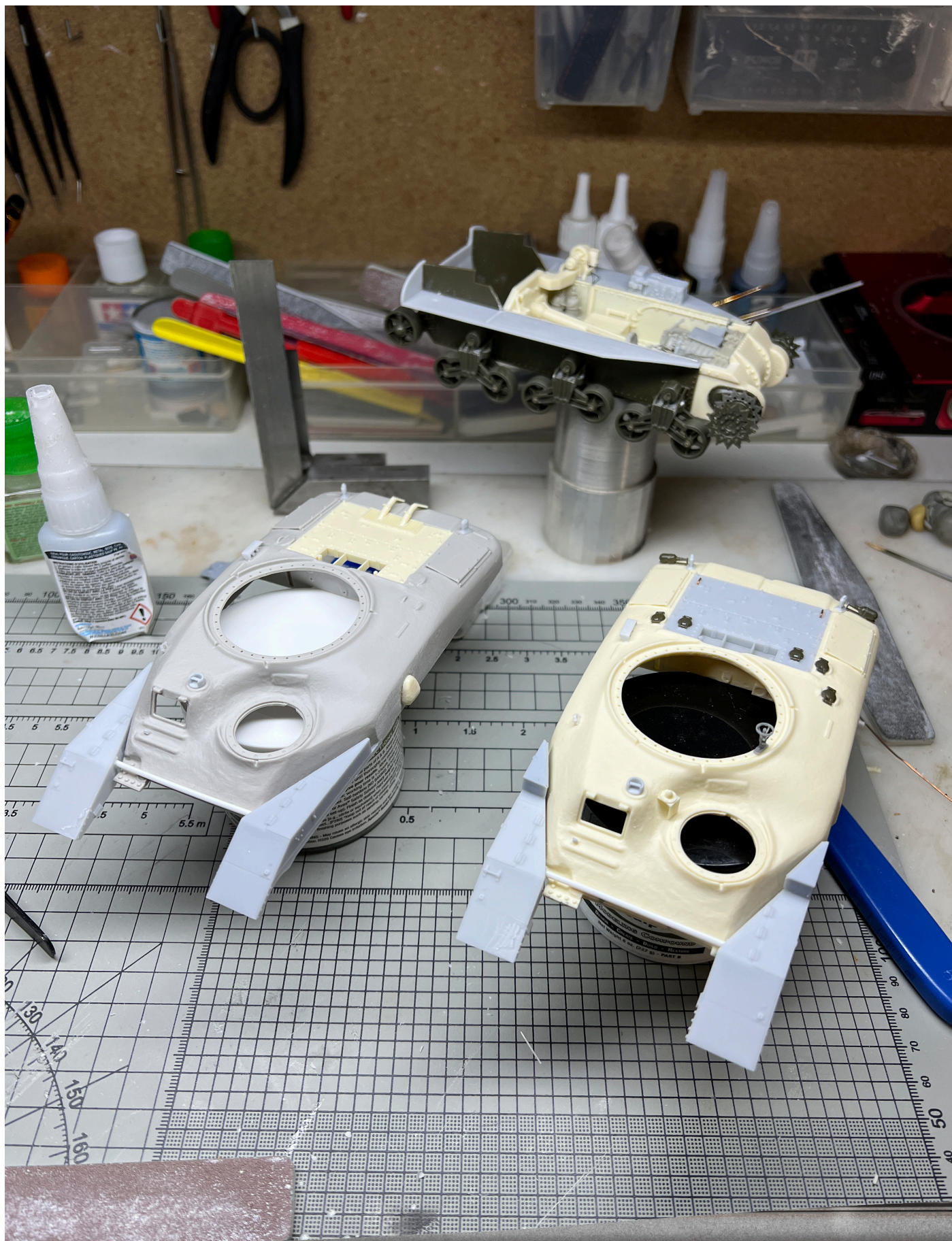
TURN THE HULL AGAIN AND THEN GLUE PLASTIC PARTS AND ADD RESIN PARTS



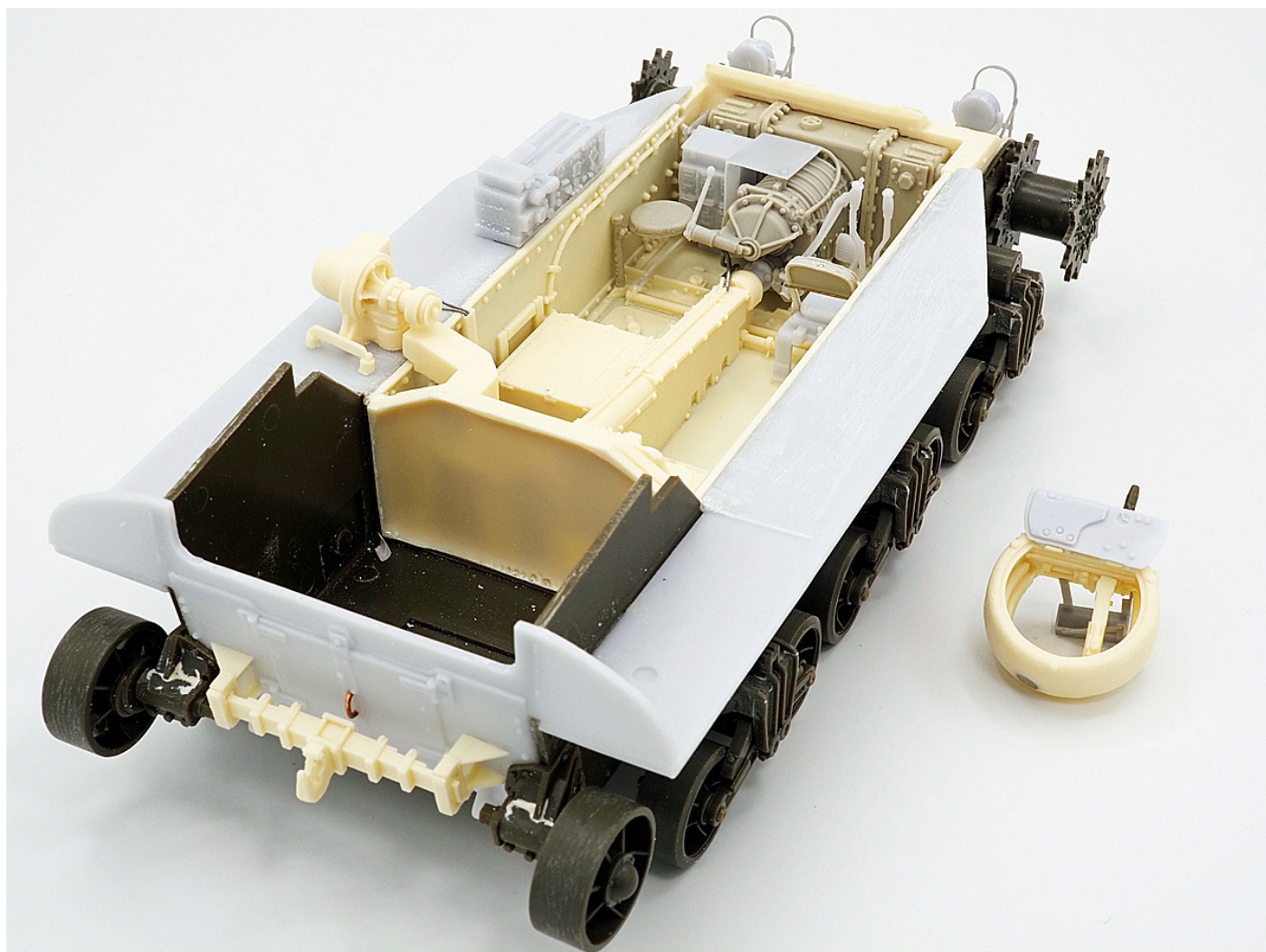
GLUE RESIN PARTS AND ADD MINISTRIP

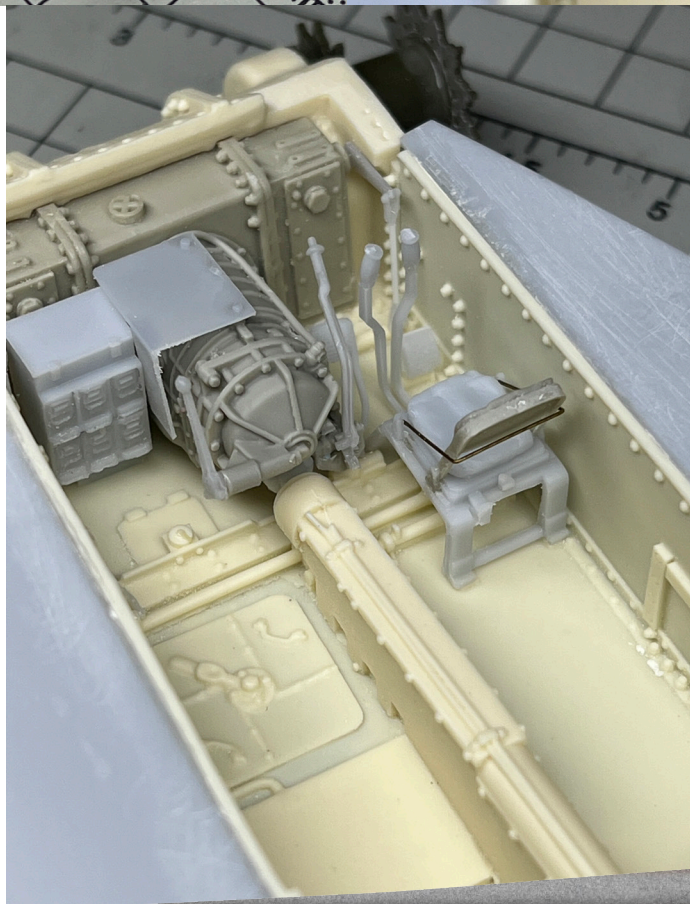
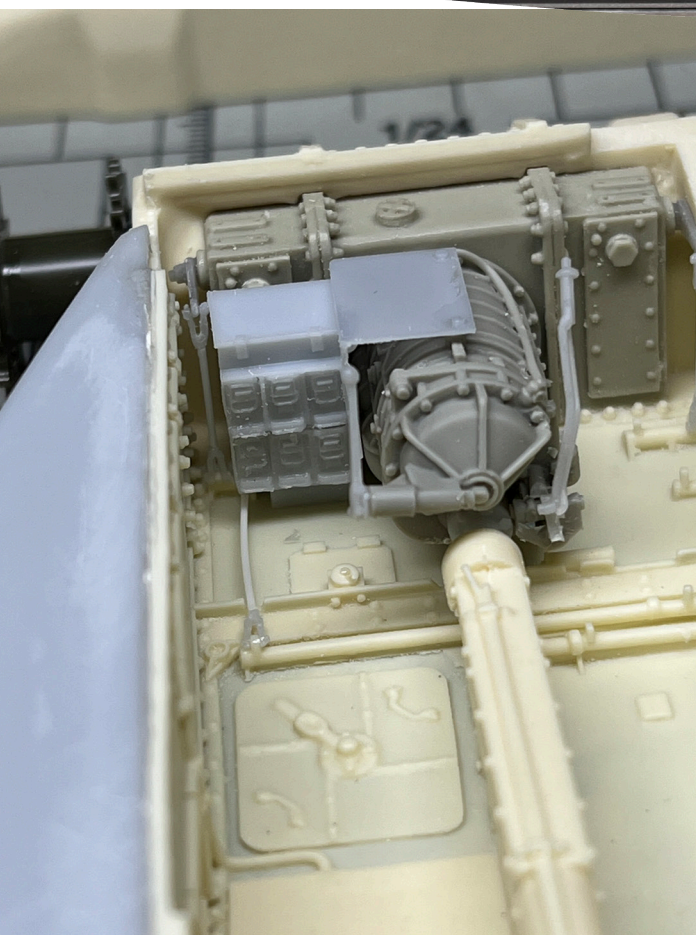
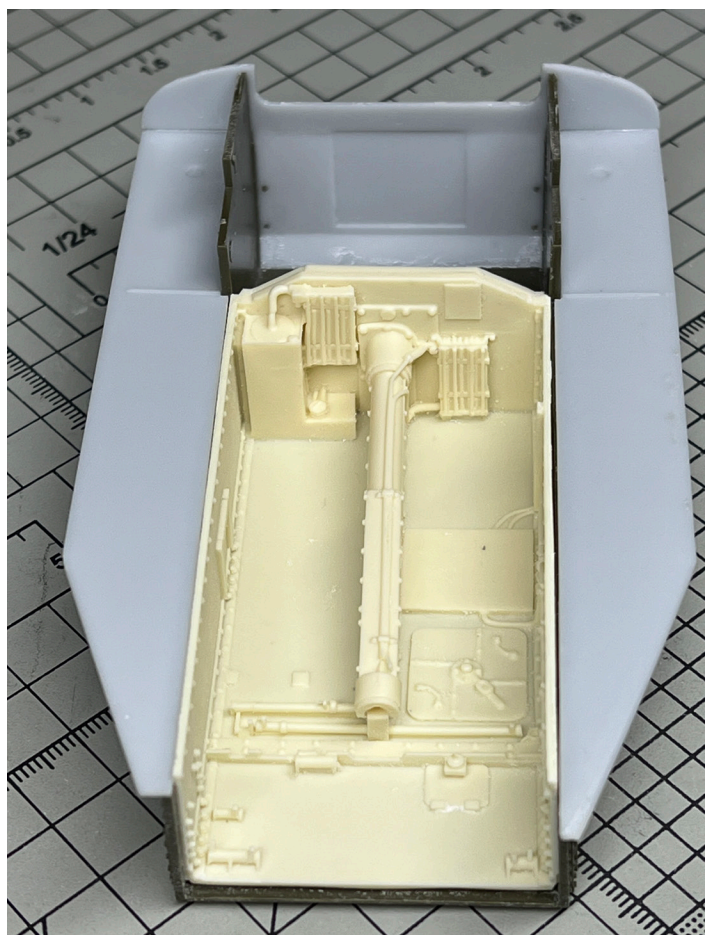


FINAL VIEW BOTH OPTION



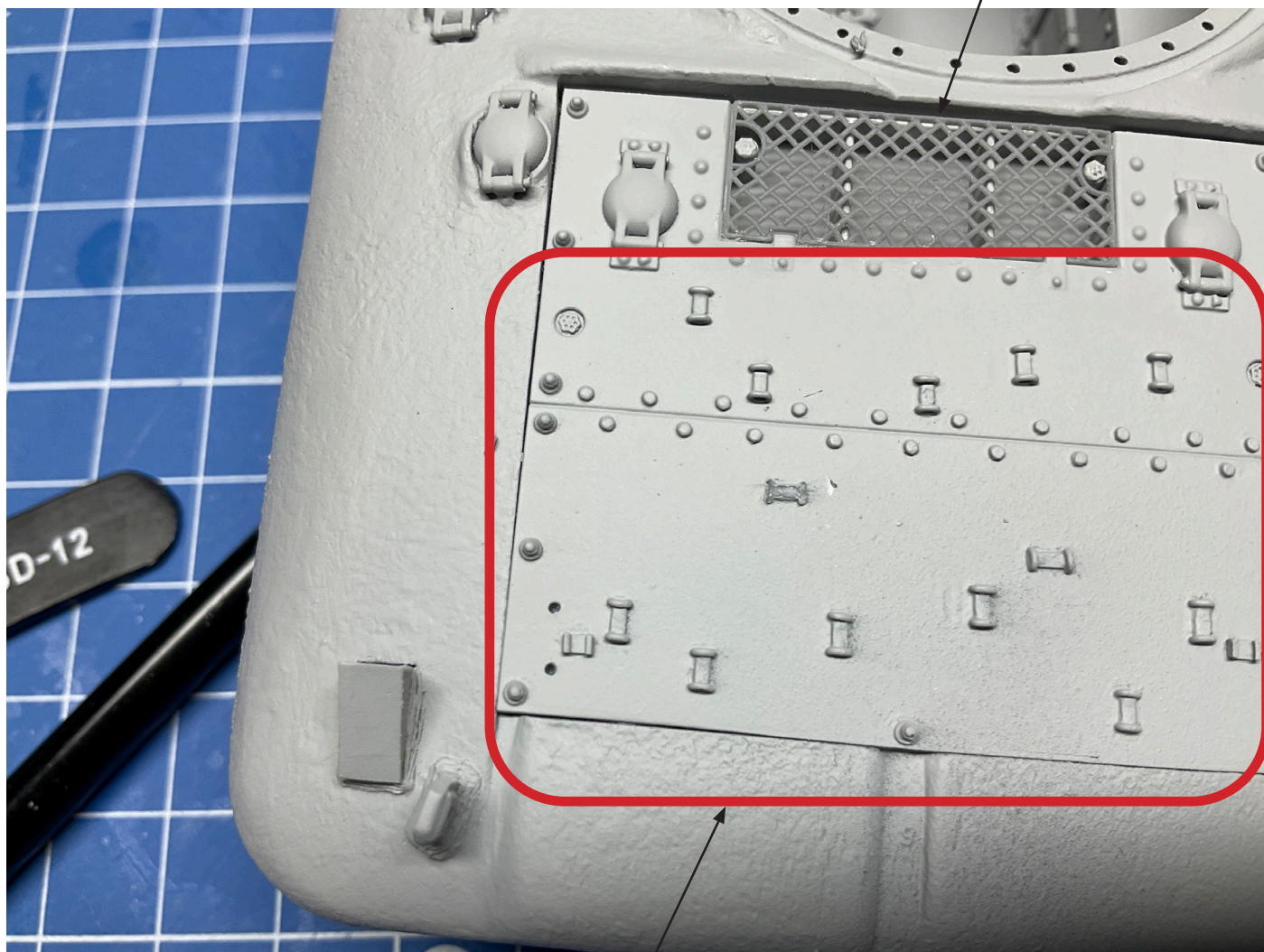
GUN TRACTOR OPTION



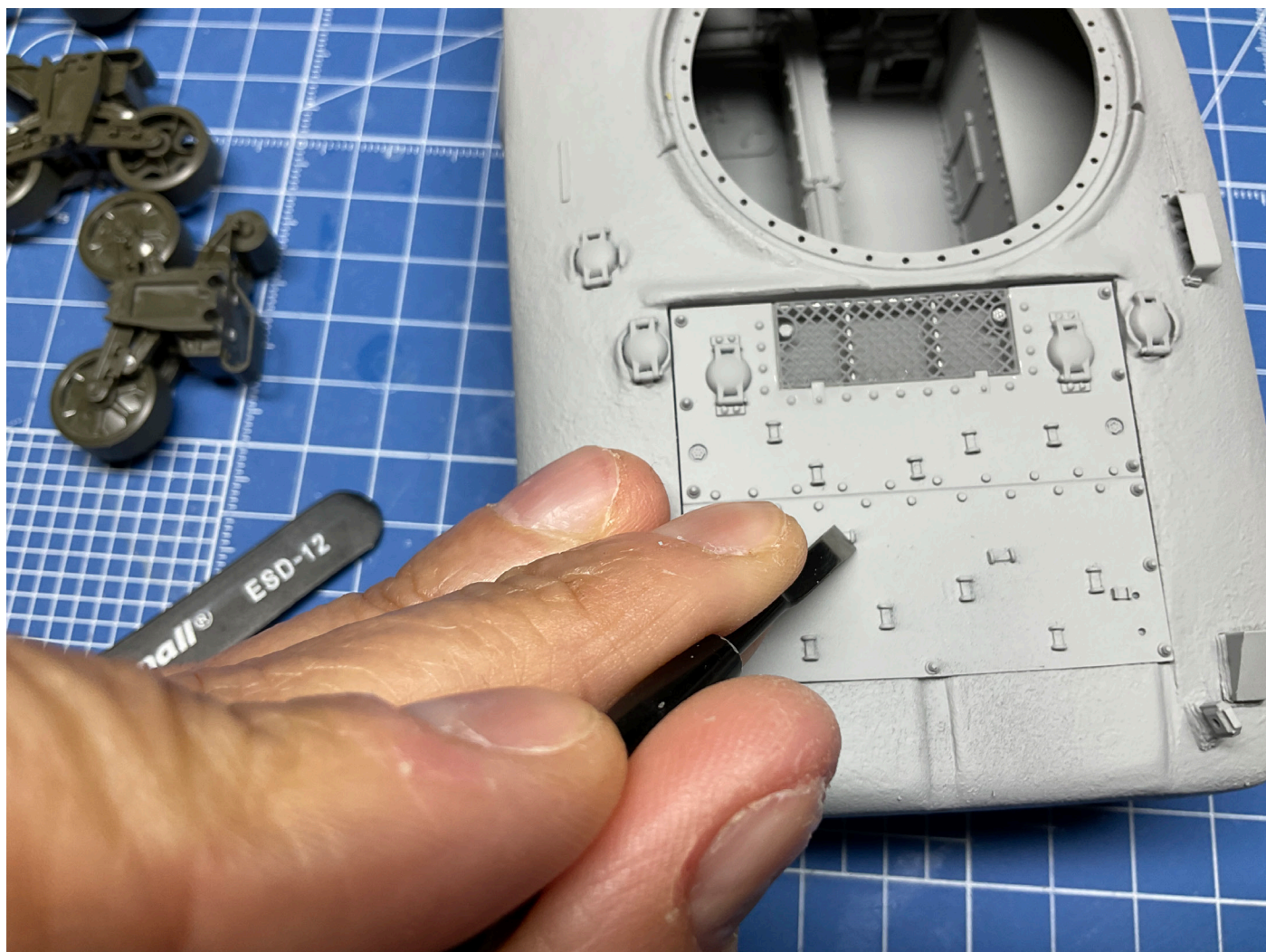


11) OVM TOOLS AND 3D PARTS

GLUE NET (3D PART)



IF YOU DON'T INSTALL OVM TOOLS LEAVE AS IT THIS.

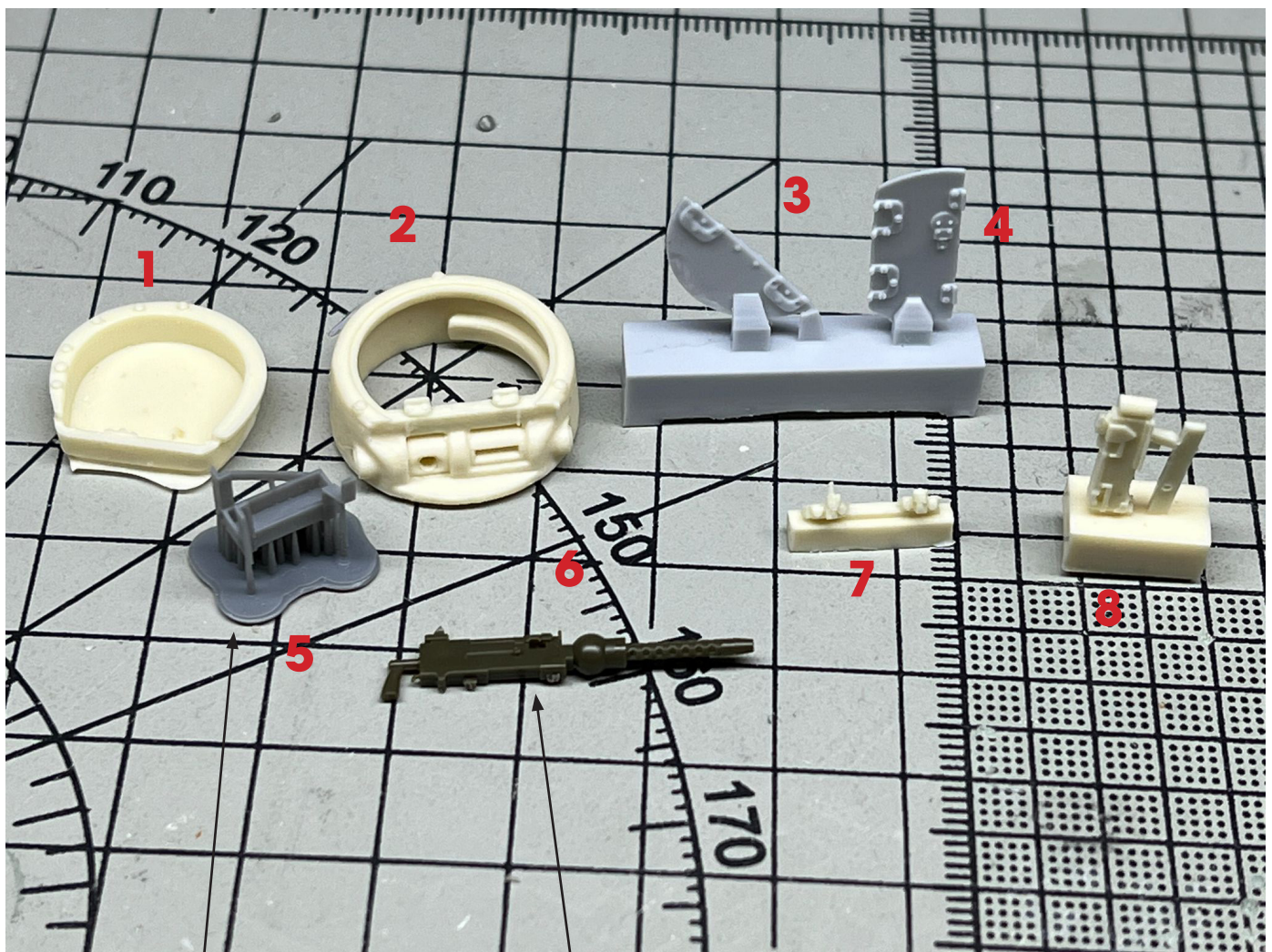


IF YOU WANT INSTALL ANY OVM TOOLS SHAVE OFF CORRESPONDENT LOOP
THEN GLUE 3D PART OVER.

3DPARTS OPTIONS: THE TOOLS COULD BE WITH OR WITHOUT OVM INSTALLED

Assemble gun tower

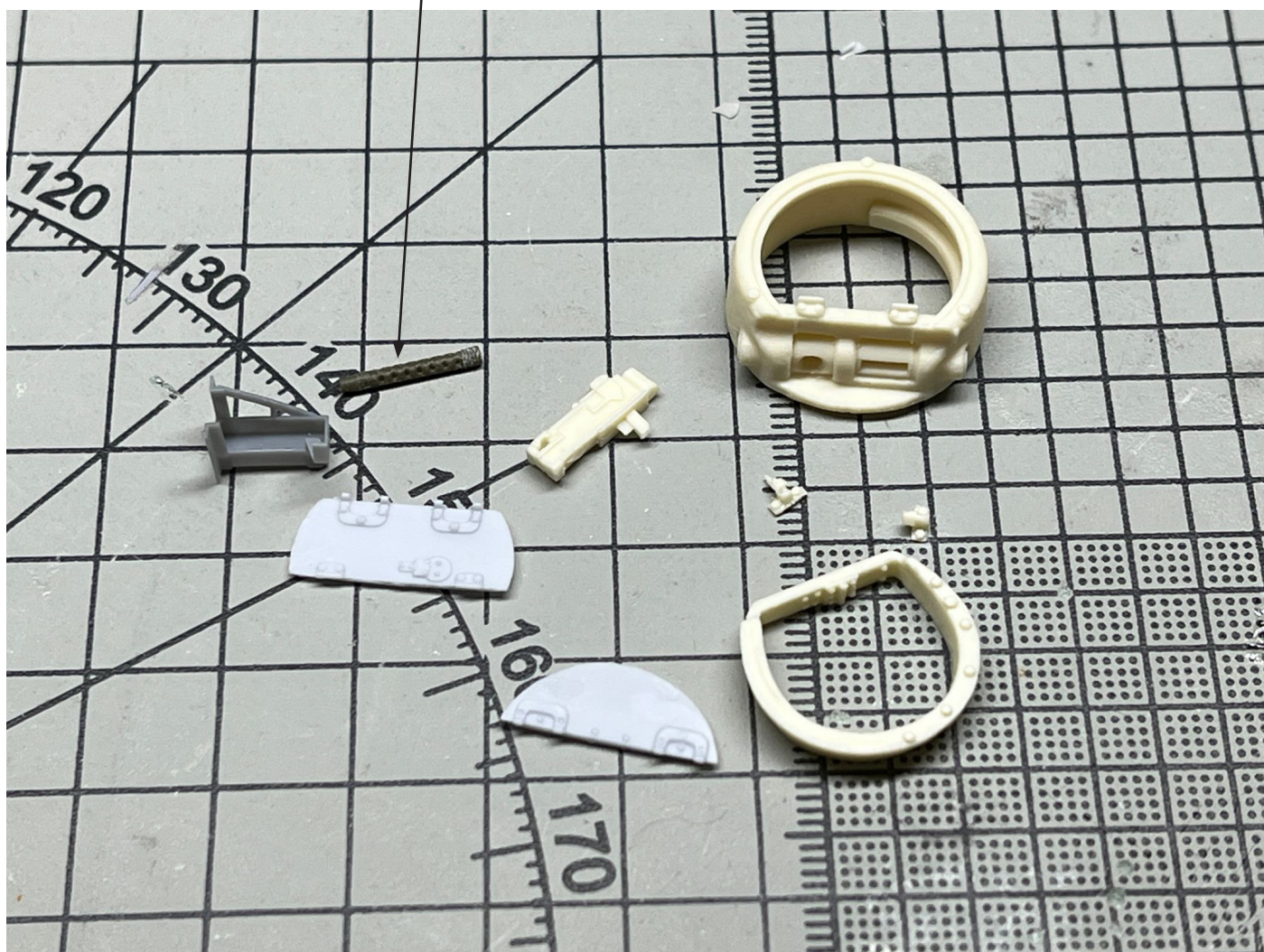
Part list



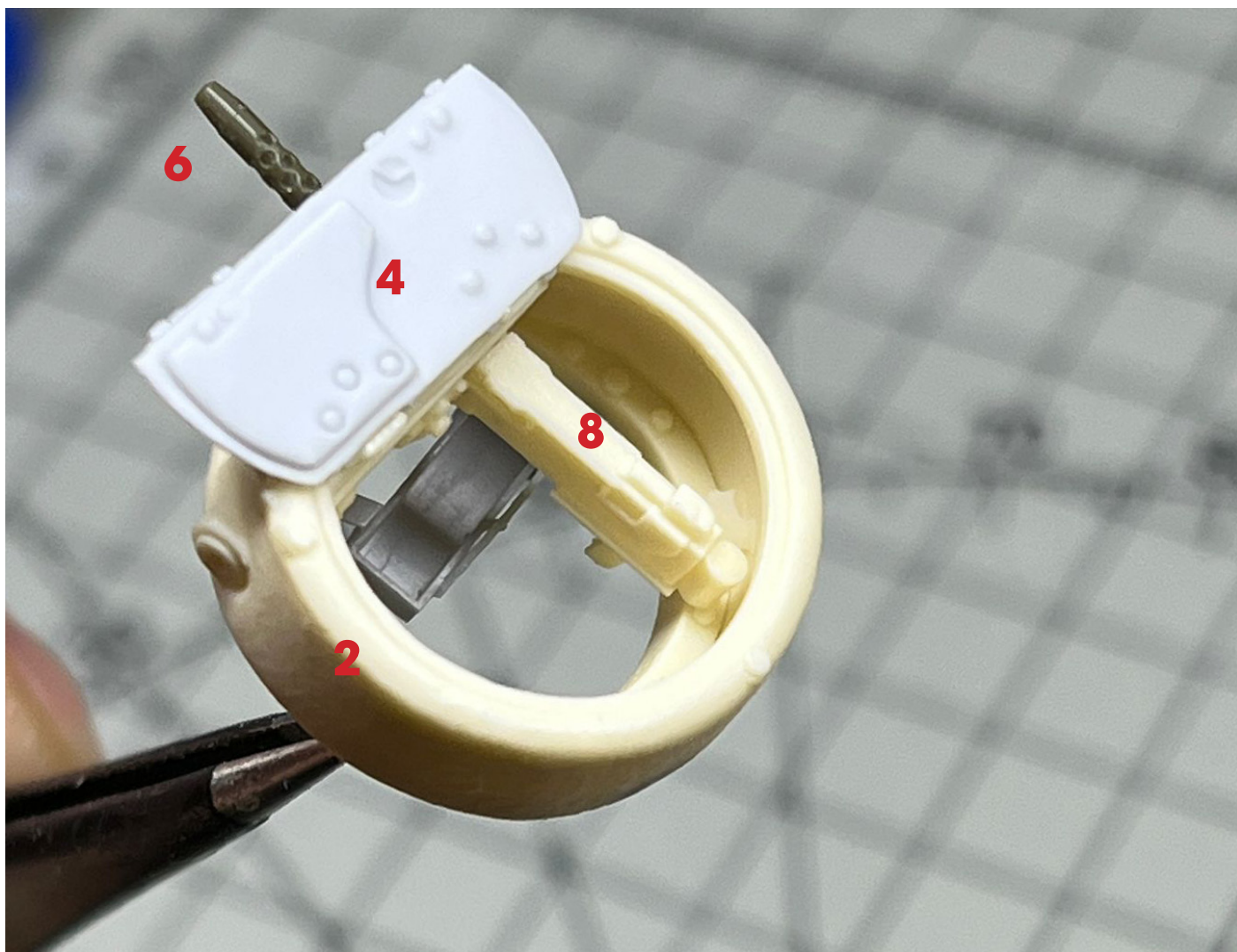
3D part

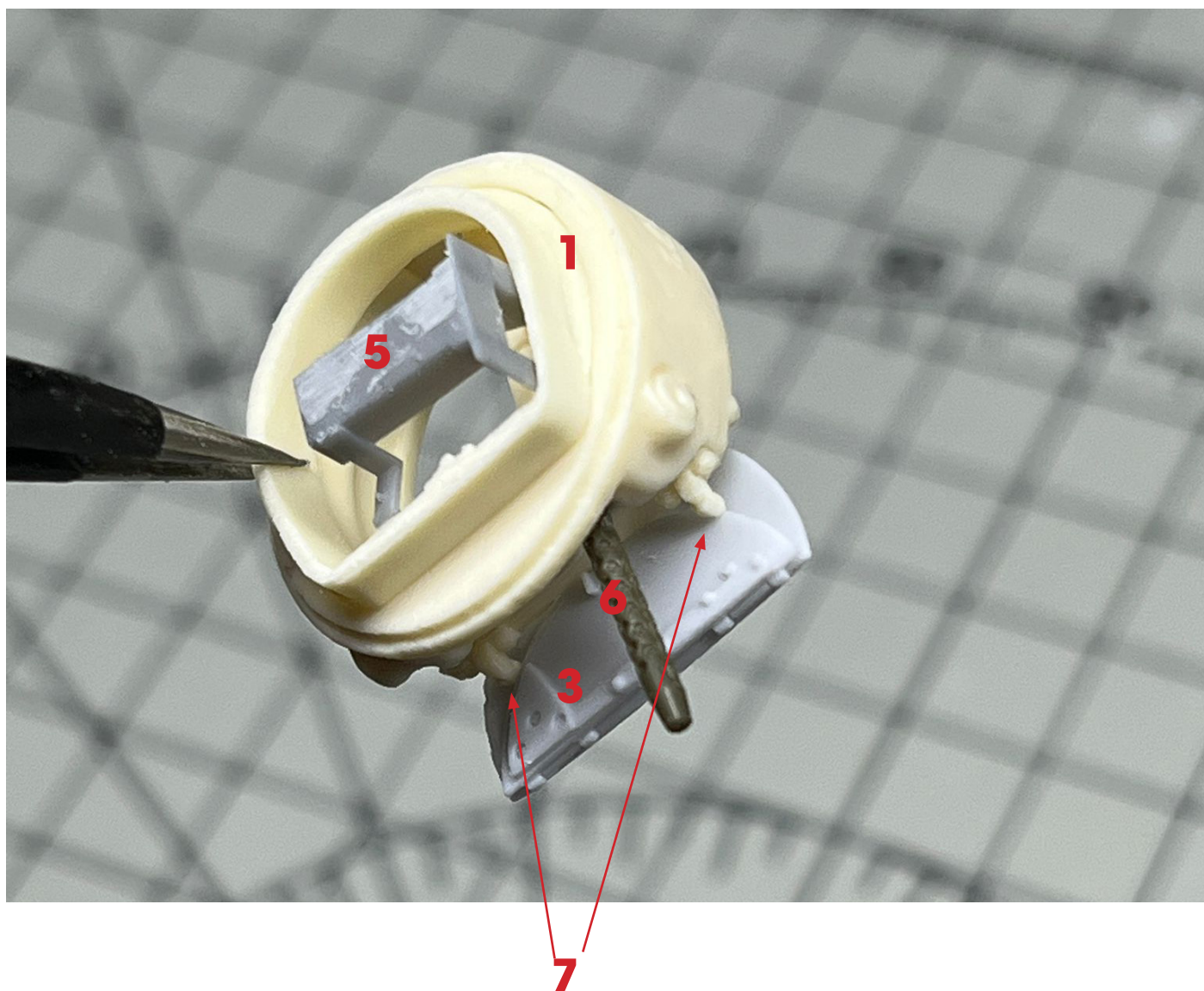
Plastic kit part

Cut the barrel of machine gun



Glue upper part with lower part

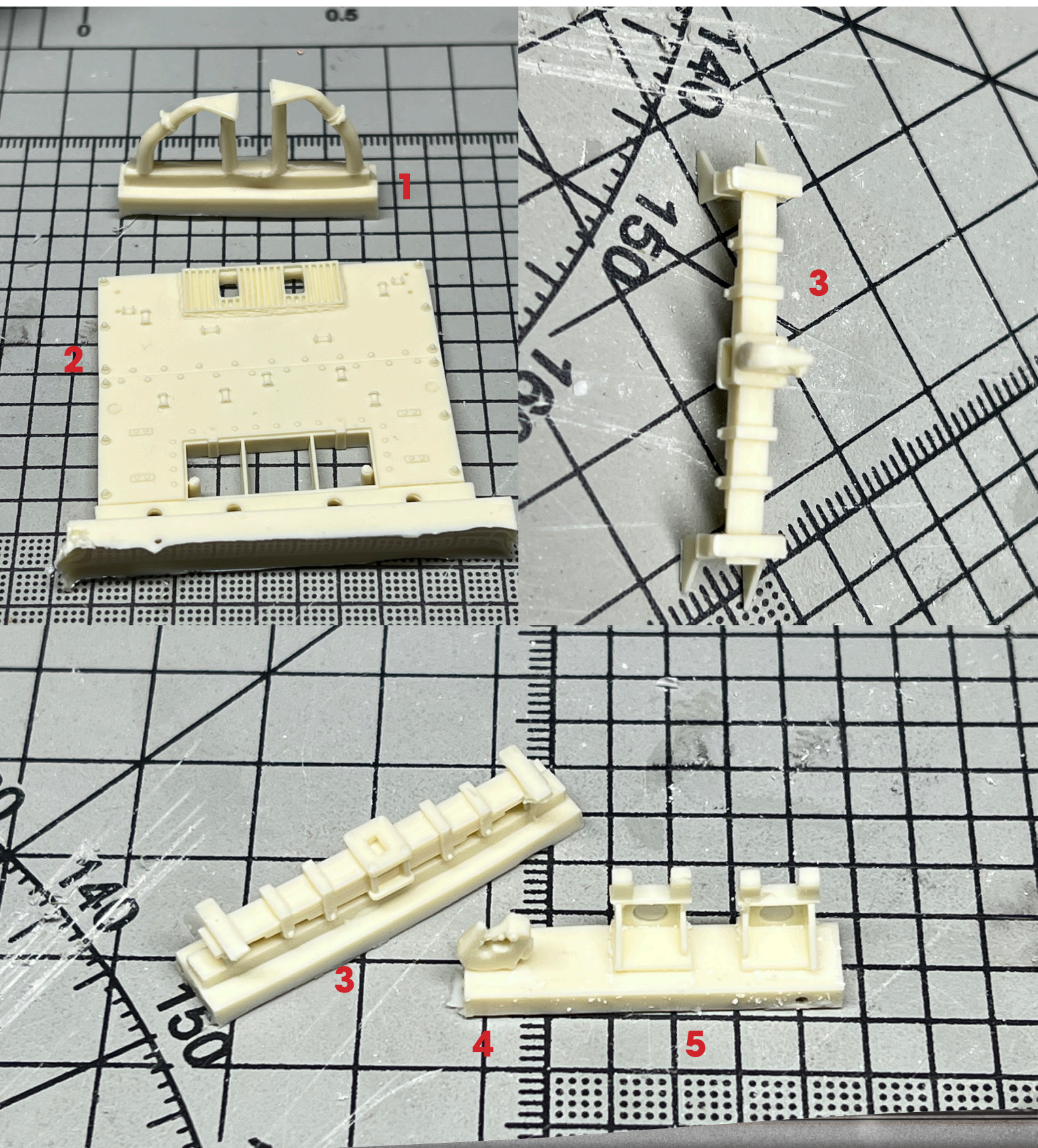


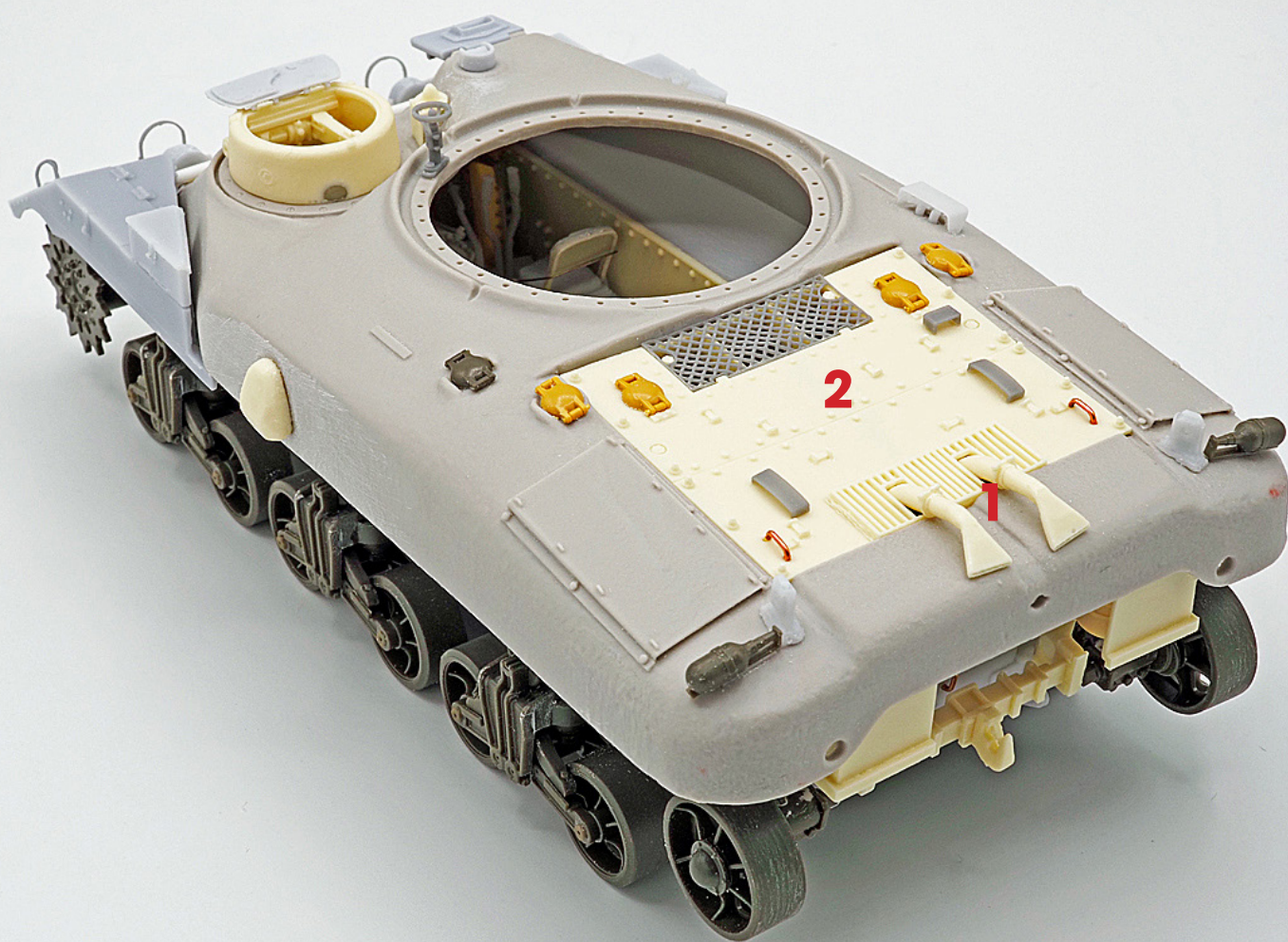


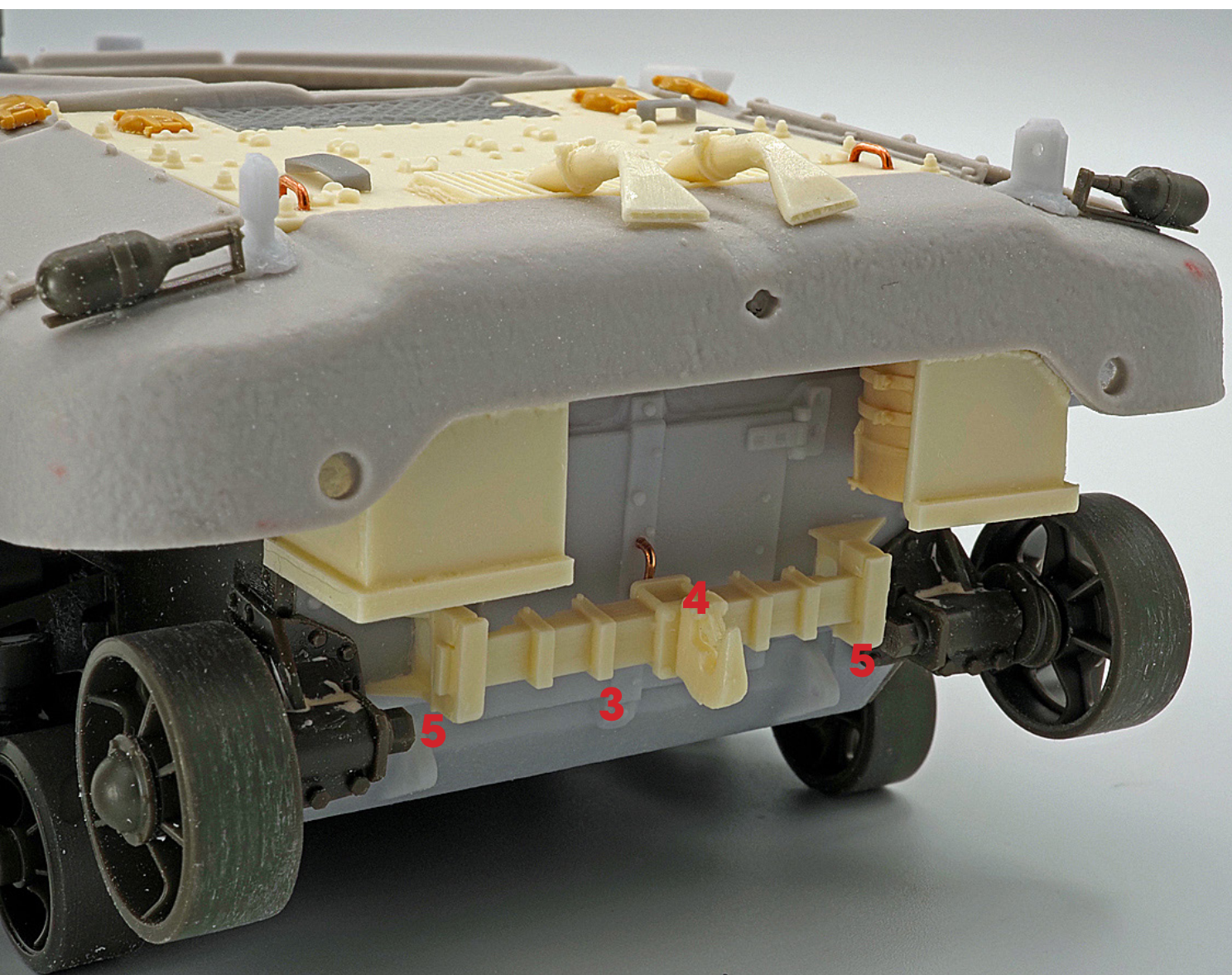
Gun tower view



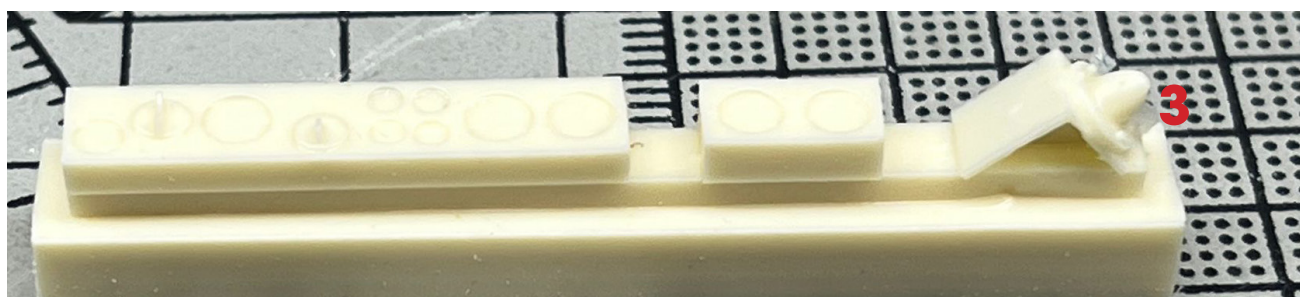
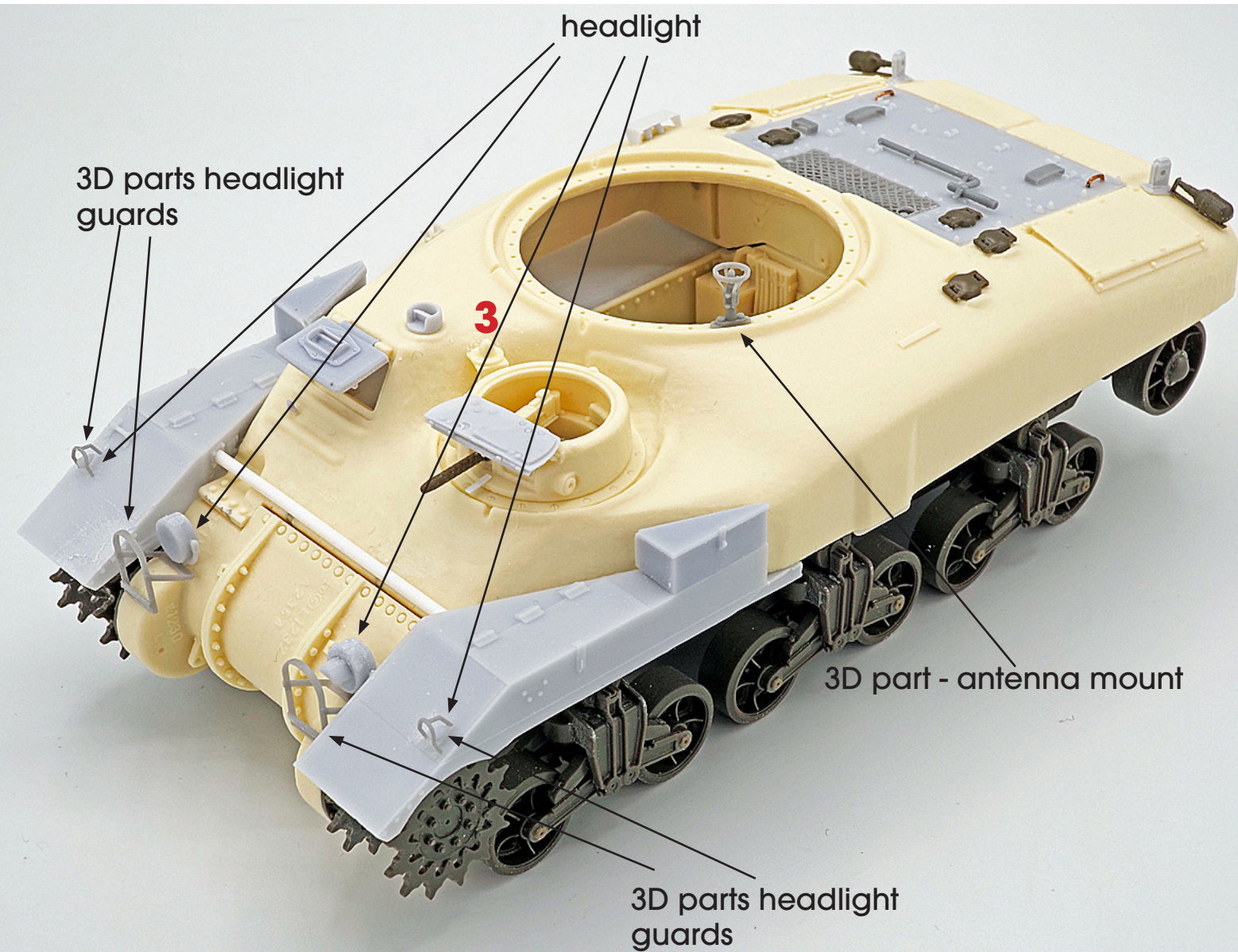
GUN TRACTIOR VERSION

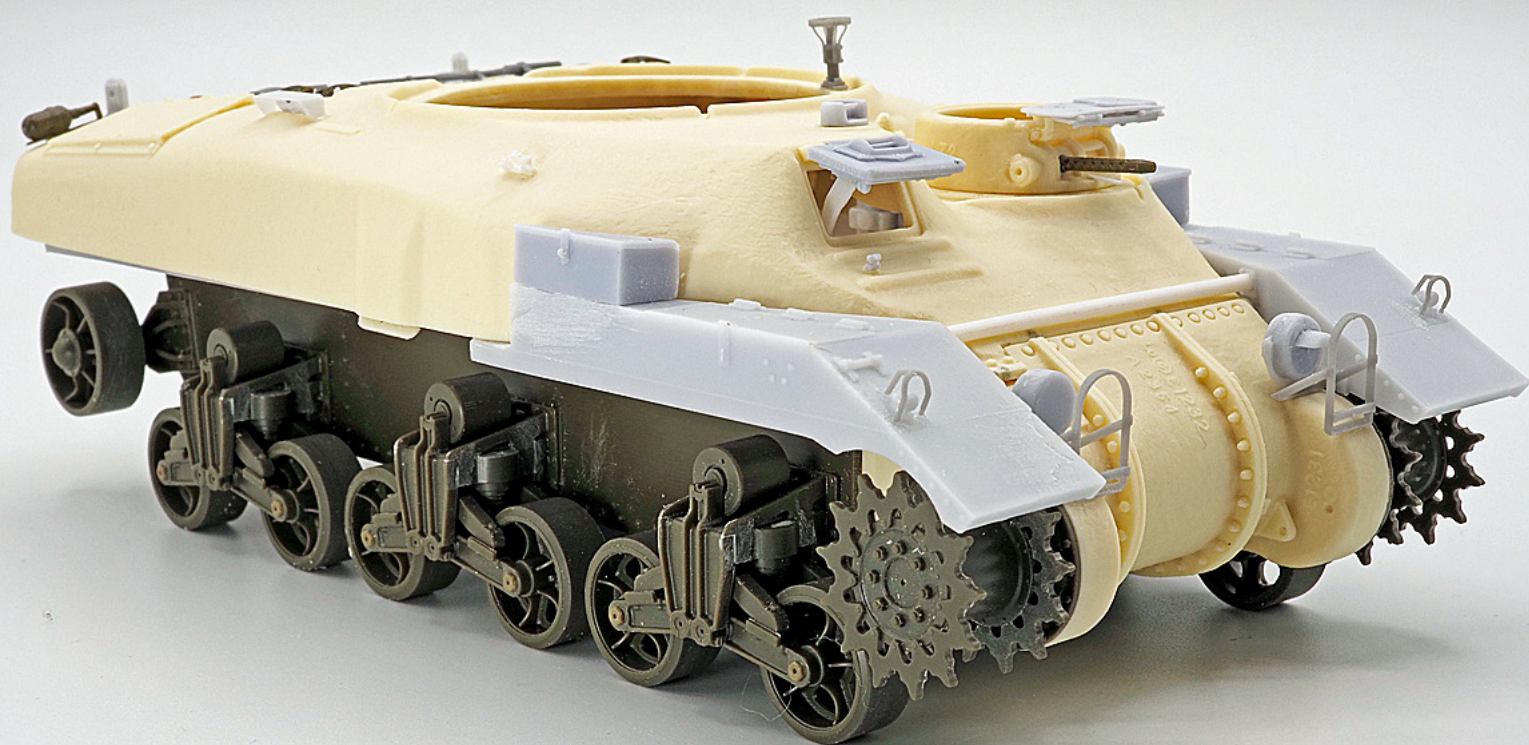


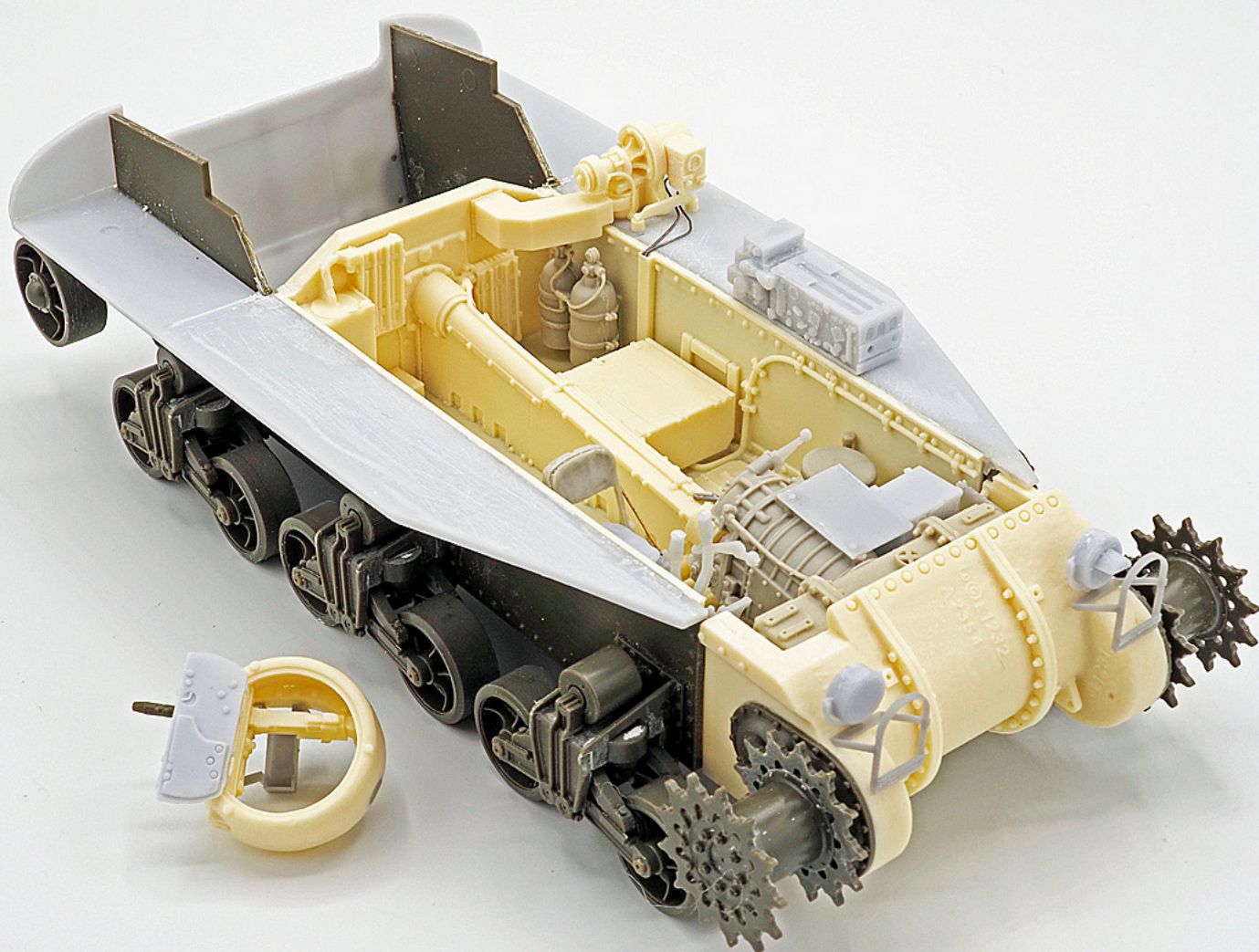




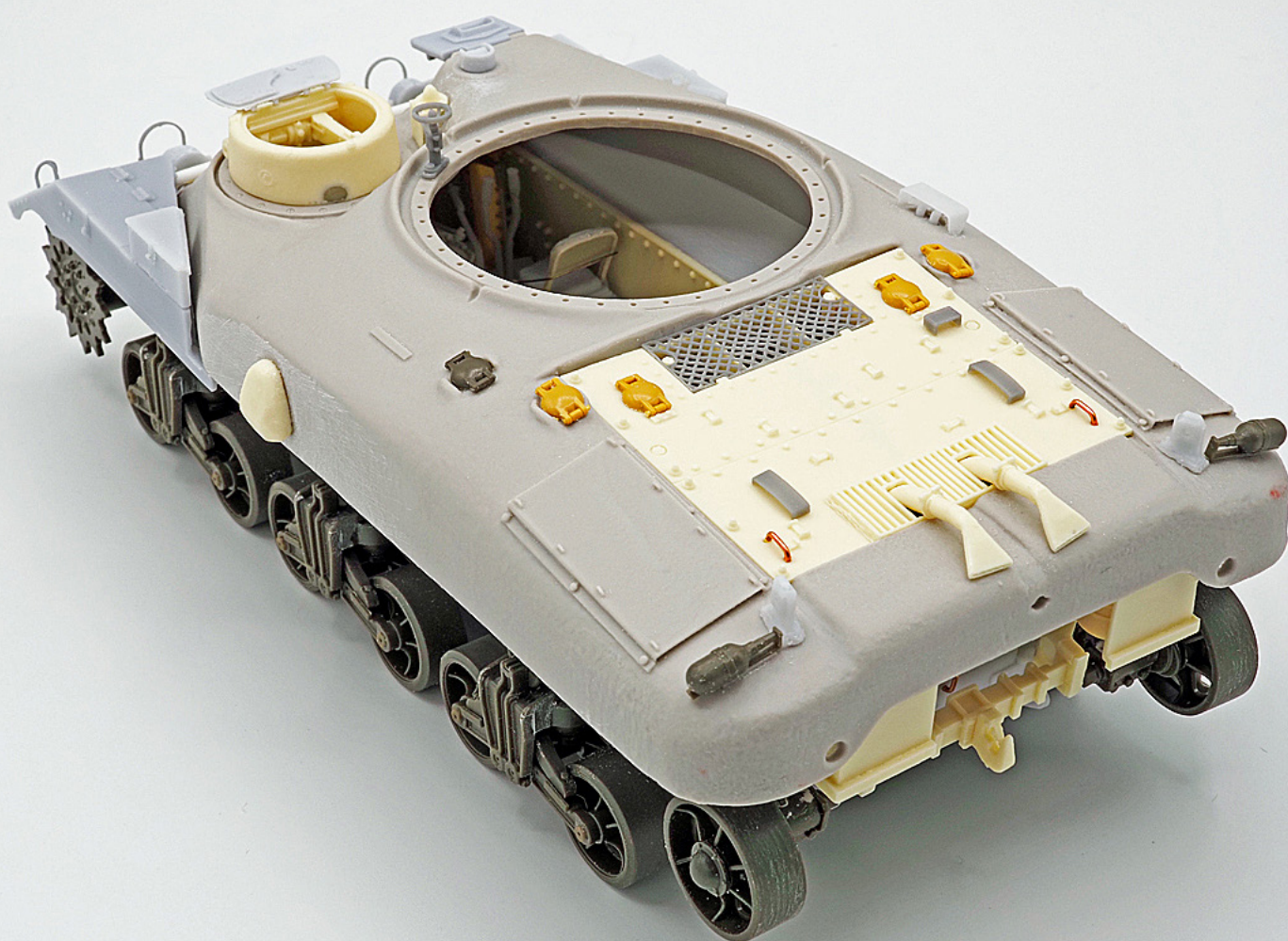
12) FRONT HULL



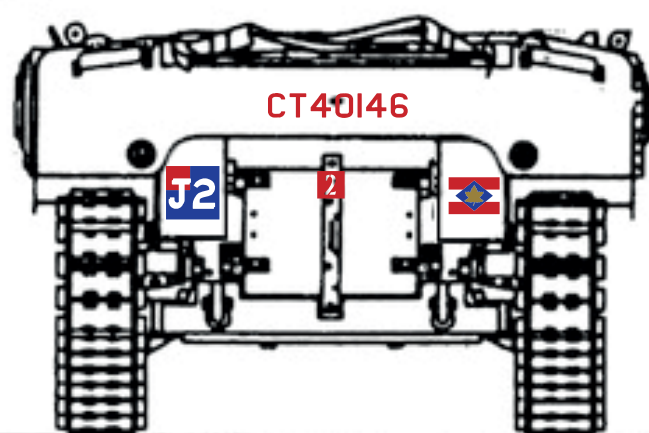
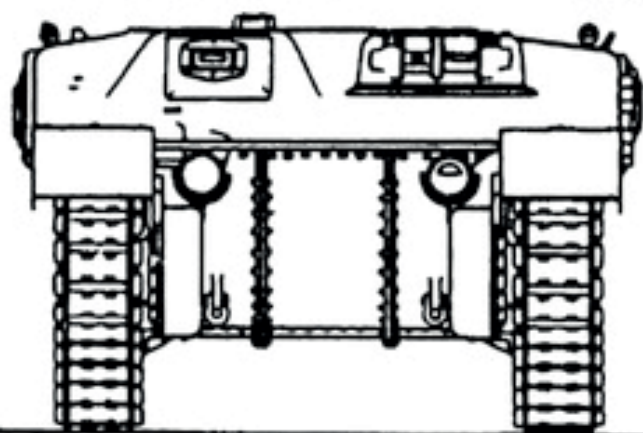
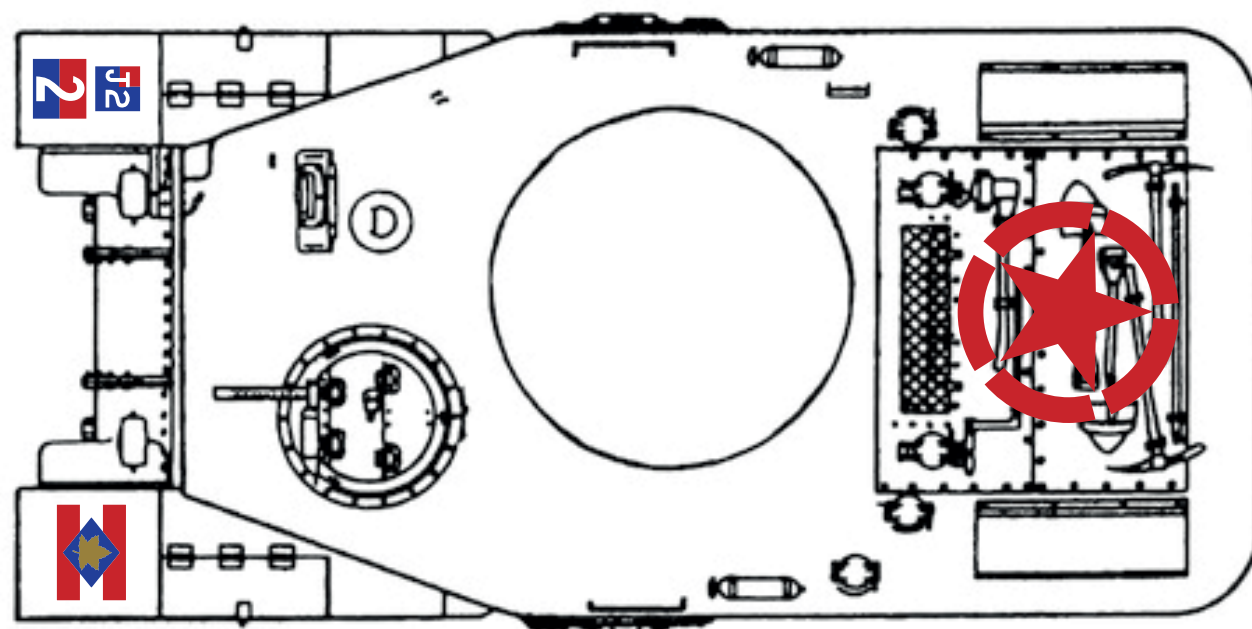
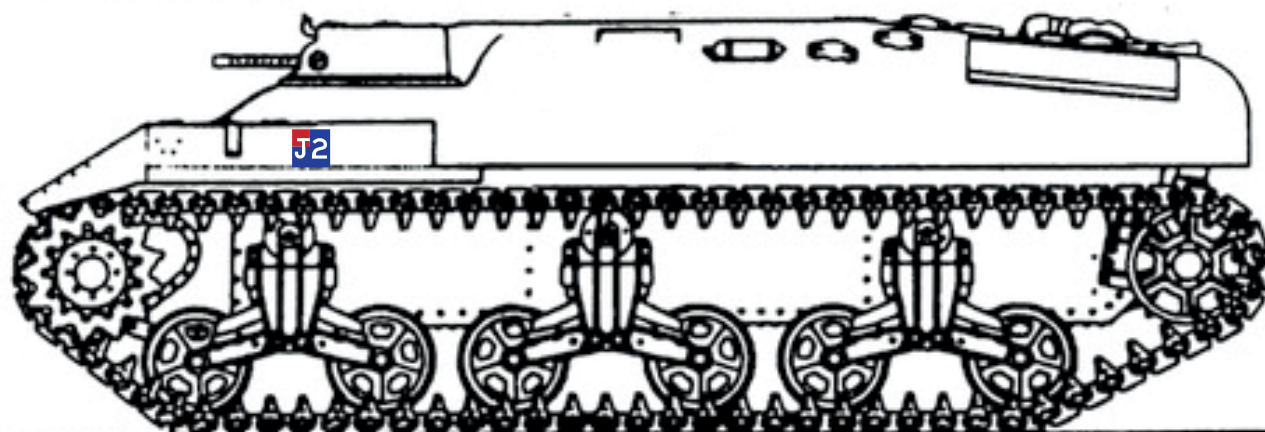








RAM Kangaroo



RAM Kangaroo

optional

